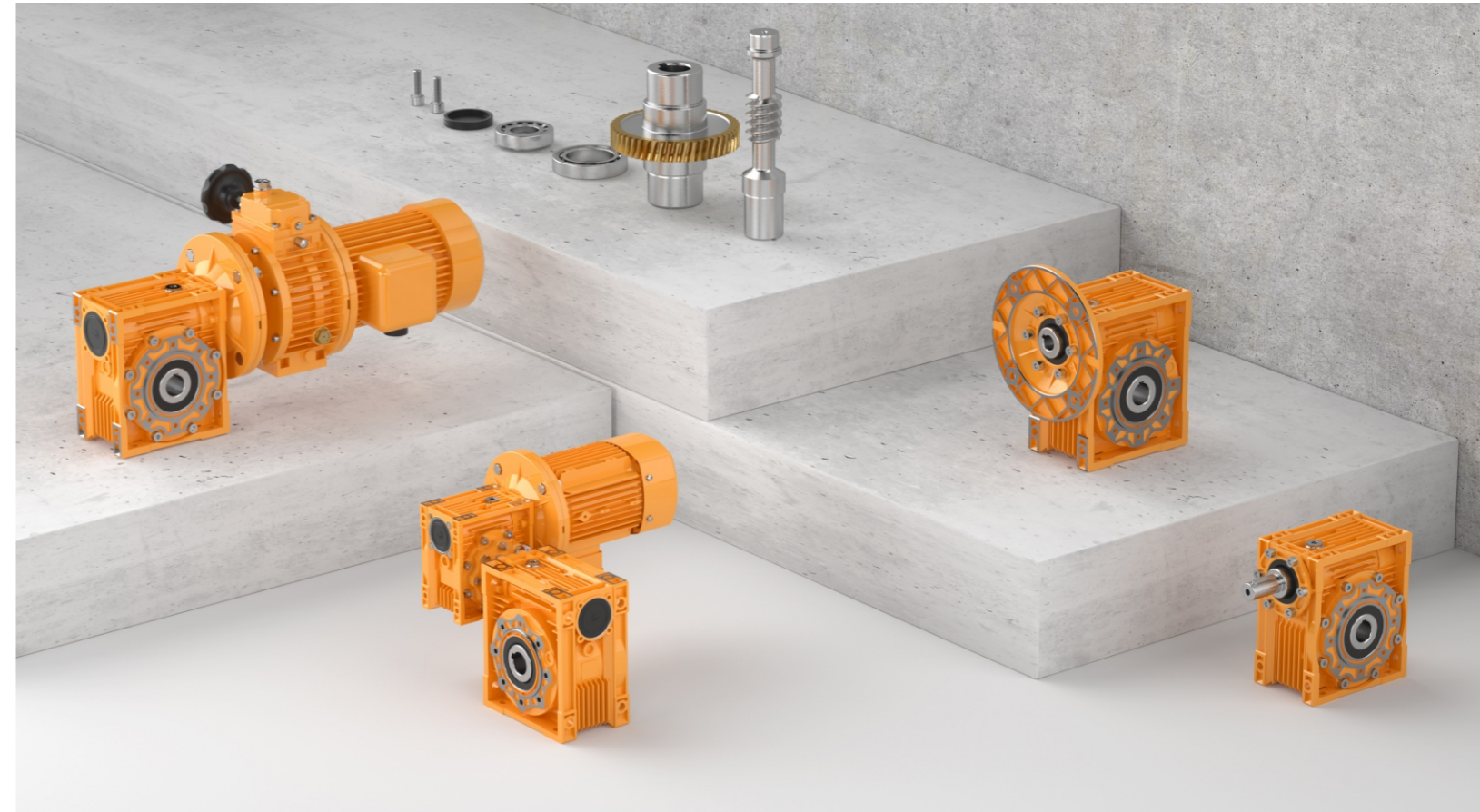


版本号：XG-B-06-2024/11-A-1000



星光传动官方网站



星光传动官方微信

**广东星光传动股份有限公司**

GUANGDONG STARSHINE DRIVE CO.,LTD.

广东省佛山市三水区白坭镇汇金工业城10号  
ADD: NO. 10 Huijin Industrial Park, Baini, Sanshui District, Foshan, Guangdong P.R. China.

HTTP://www.xgcd.cn 中文域名: 星光传动. 网址

TEL: 400 850 5665 FAX: 0757-66639837/838

E-MAIL: xg-sales@xgcd.cn

## RV系列蜗杆减速器

RV SERIES WORM GEAR REDUCER

动静之间 · 唯简不凡



广东星光传动股份有限公司前身是一家创建于1965年的国有军工企业——国营星光工模具厂，公司在追求全体员工物质和精神双重幸福的同时，以行业领先的减变速机应用技术，驱动全球工业革新为使命，建设觉悟型组织，成为服务全球的幸福企业为愿景。

公司技术力量雄厚，现有员工420余人，其中工程技术人员40多名，和各种先进的加工制造和检测设备，依托省级工程技术研究中心、减速机产品试验室和现代化研发和生产基地，为高端减变速机产品的行业应用开发和服务提供了良好的发展基础。

公司主导产品有：NCJ系列齿轮减速机、R/S/K/F系列高精度齿轮减速机、RV系列蜗杆减速机、SNKG系列齿轮减速机、JWB-X系列机械无级变速器、B/JXJ系列摆线针轮减速机、SCK系列准双曲面齿轮减速机等七大系列产品可供选用，广泛服务于陶瓷、纺织、玻璃、木工、高压开关、食品饮料、包装印刷、仓储物流、起重运输等装备制造和应用行业，专为中高端用户提供专业的产品和服务。产品畅销国内，远销欧美、中东、东南亚等20多个国家和地区。

在未来的发展中，星光传动聚焦客户需求，提供有竞争力的传动解决方案，持续为客户创造价值，打造高端制造业和终端用户“替代进口、升级换代”的首选品牌！

动静之间，唯简不凡；携手同行，星光灿烂！

Guangdong Starshine Drive Co.,Ltd, the predecessor was a state-owned military mould enterprise which established in 1965. While pursuing the spiritual and material happiness of all employees, With the Mission" with industry-leading reduction and transmission technology to drive industrial renewal" and Vision" Build a conscious organization, become a happy enterprise serving the world".

Starshine has a strong technical force with over 400 employees at present, including over 40 engineering technicians, and kinds of advanced processing machines and testing equipment. Thanks to the Provincial Engineering Technology Research Center, the speed reducer product laboratory, the modern R&D and production base, that make Starshine has a good foundation to develop and service for high-end speed reducers.

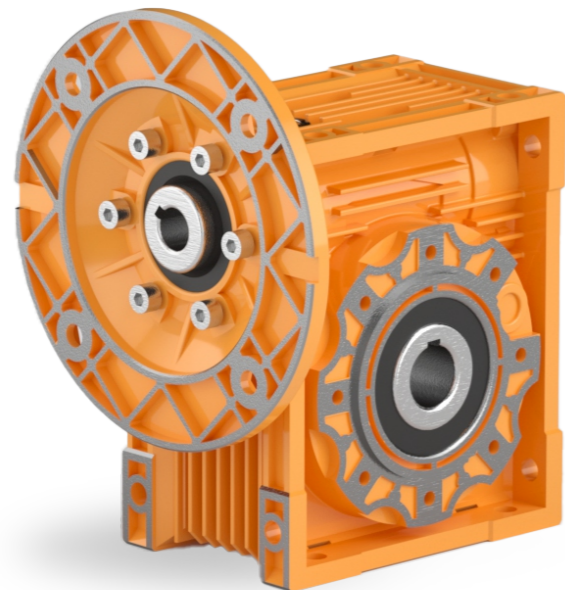
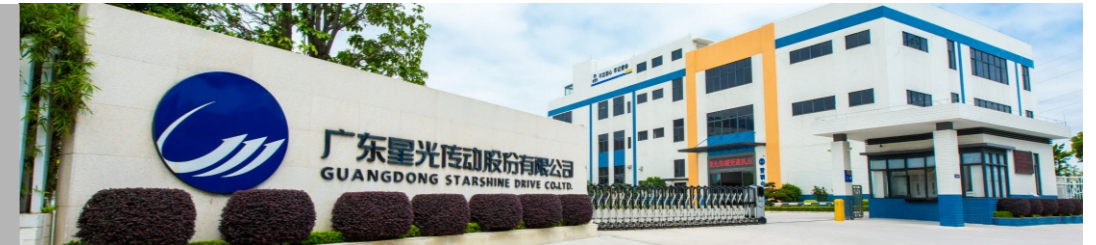
Our main products include: helical geared motor, worm gearboxes, planetary gearboxes, speed variators, cycloidal gearboxes, helical-hypoid gearboxes, which widely used in ceramic industry, glass industry, woodworking machinery, high voltage switch, food & beverage, packaging & printing, Storage & logistics, hoisting & transportation facilities...etc, Starshine technically provide the professional product & service for the medium and high-end customers, and our gearboxes are best-selling in both domestic and abroad market, such as Europe, North America, South America, Middle East, South Asia, Southeast Asia, Africa...etc more than 20 countries and regions.

In future, Starshine will hold the business creed of "serving customer, diligence & simplicity, self-criticism, innovation, honesty, teamwork", and take "authenticity, altruism, openness, innovation, responsibility, collaboration" as core values. Focus on customers' requirements and provide them the competitive transmission solution and create value for them constantly, and create a preferred brand of replacing import products and upgrading continuously for the end users.

Between Dynamic and Static, Simple is Extraordinary, let's go forward hand in hand and make a brilliant future!

# 目录 CONTENT

国之星光



## RV系列蜗杆减速器

RV SERIES WORM GEAR REDUCER

产品简介 Introduction .....	01-03	PC+NMRV外形安装尺寸图 PC+NMRV outline dimensions diagram .....	59
选用指南 Selection guide .....	04	PC+NMRV联体型性能参数 Performance parameter .....	60-65
工作系数表 Servicefactor table.....	05	组合型无级调速蜗杆减速器型号表示法 Model designation for worm gear reducer with variator .....	66
型号表示法 Model designation.....	06-07	组合型无级调速蜗杆减速器性能参数表 Selection table for worm gear reducer with variator .....	67-71
安装位置 Mounting positions.....	08-11	组合型无级调速蜗杆减速器尺寸图 Dimension of worm gearbox with variator .....	72-73
输入法兰尺寸表 Input flange dimension.....	12-13	电动机型号参数表(一) Motor specificationc(一).....	74
NMRV外型尺寸图 NMRV outline dimensional drawing .....	14-23	电动机型号参数表(二) Motor specificationc(二).....	75
减速器选型表 Gear unit selection tables .....	24-46	润滑油 Lubricant .....	76-77
特征表 Characteristic table .....	47		
组合型二级蜗杆减速器型号表示 Modle designation for double stage worm gear reducer ..	48-49		
组合型二级蜗杆减速器外型尺寸图 Diagram for double-stage worm redcer combination ..	50		
NMRV联体型性能参数 Performance parameter .....	51-54		
减速器选型表 Gear unit selection tables .....	55-57		
PC+NMRV前置齿轮蜗杆减速器型号表示法 PC+NMRV worm gearbox model designation .....	58		

● **产品简介 Introduction**

RV系列蜗杆减速器是星光传动公司凭借先进传动机械制造技术、吸收国际先进工艺的基础上最新推出的新型蜗杆减速器。产品通过ISO9001质量体系认证，符合标准Q/XGJD1-2021,备案号QB/44060021416-2021。

新型蜗杆减速器主要有以下突出优点：

- 1、外形采用“方箱型”结构，RV030~105箱体采用优质压铸铝成形；RV110~150箱体采用精密金属模铸铁件，整机外形美观、体积小、散热快、安装灵活；
  - 2、蜗杆采用优质合金钢经特殊热处理工艺，表面硬度高，弹性好；蜗轮啮合部分采用专利优质铜合金，各项性能指标远超国内同类产品；
  - 3、蜗轮蜗杆副采用精密加工制造和精密啮合检测，确保整机传动平稳、温升低、噪音小、效率高、寿命长；
  - 4、蜗轮蜗杆输入、输出部分采用精密光整处理，确保整机不生锈，提高产品档次和使用寿命；
  - 5、整机采用高质量的轴承传动件和高效可靠的密封件，确保无渗漏；
  - 6、JWB+NMRV系列“变速蜗杆减速器”，能在负载中调节输出转速，实现无级变速输出。
- RV系列蜗杆减速器用途广泛，是现代工业装备实现大减速比动力及控制的理想选择。

RV series worm reducers is the new product latest promoted by Xingguang transmission combining our ad-vanced transmission manufacture technology and the advanced international technology.RV series worm reducers have psaaes through ISO9001 interational quality system certificate and up to Q/XGJD1-2021 standard,with ref.NO.Q-B/44060021416-2021.

The new worm reducers have the following outstanding advantages:

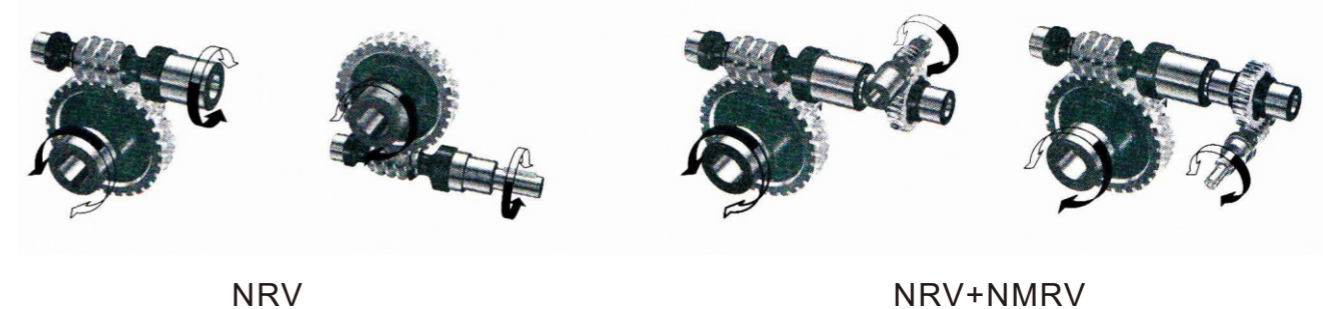
1. With cubic structure,RV030-105 is made with die cast aluminium material body and RV 110-150 castiron material. The product owns advantages of good appearance, small volume, quick radiating, flexible mounting.
2. The worm shaft was produced by special heat treatment with superior alloy steel; The meshing of the worm wheelhas patented copper alloy. Their performances are advantageous over other suppliers in China.
3. The worm gear and worm shaft adopt precision and meshing to ensure the stable transmission、low temperature、low noise level. high efficiency and long service life.
4. The input and output parts are treated by smooth, and dusty proofto increase the quality and its service life.
5. High quality bearing and seals to prevent from oilleakage.
6. JWB+NMRV series is worm gear reducer with variator, which can adjust speed on load, to obtain variable out put speed.

RV series is widely used, and an ideal choice for modern industrial equipments to realize big transmission ratio.

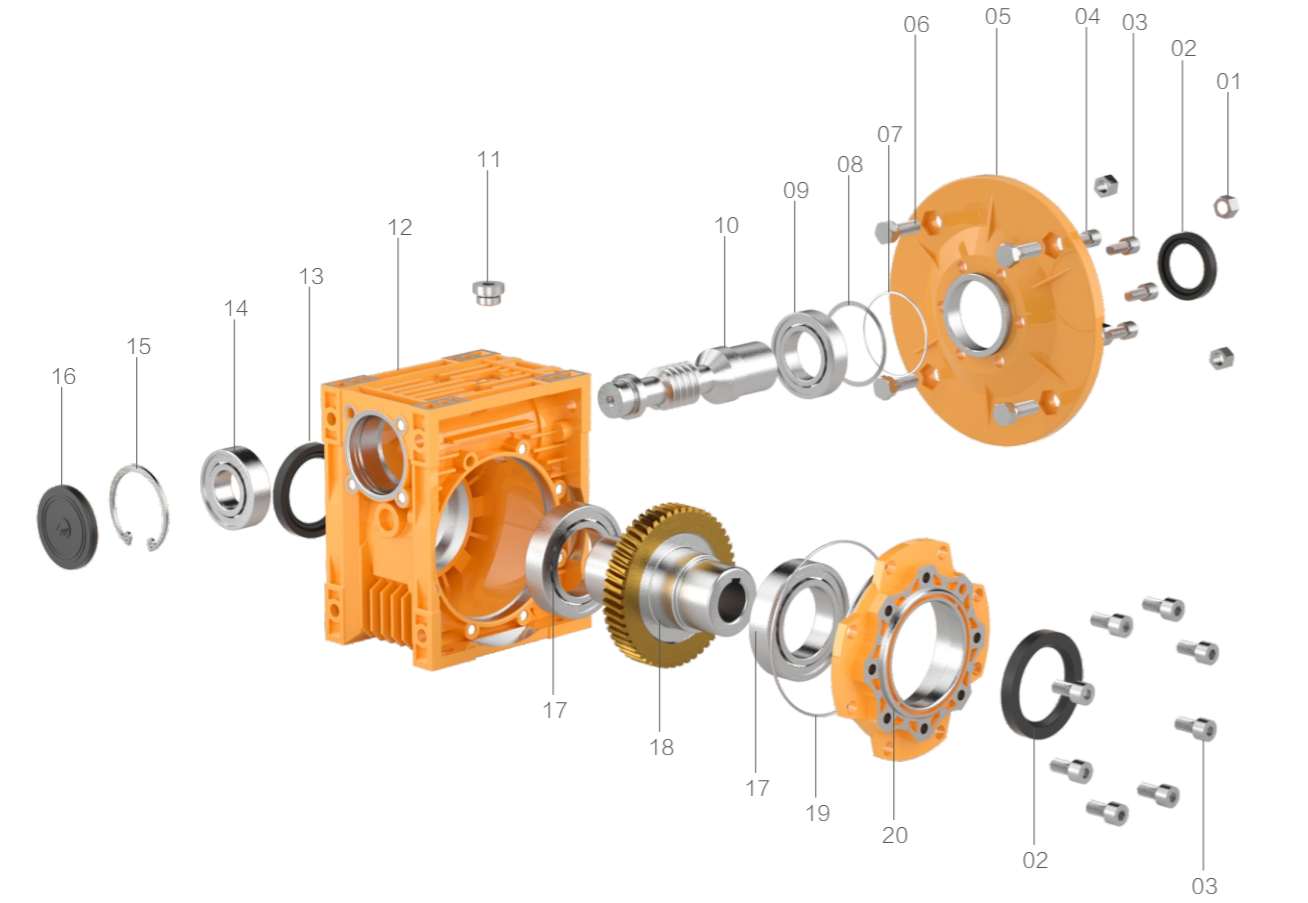
● **部分蜗杆减速器产品图片 Part of the worm accelerator product image**



● **RV蜗杆减速器转向示意图 RV direction of rotation diagram**



### 零件爆炸图及名称 Exploded view & name of parts



1、螺母 / Nut	11、油塞 / Oil plug
2、油封 / Oil seal	12、箱体 / Casing
3、内六角螺钉 / Inner hex screw	13、油封 / Oil seal
4、弹性垫圈 / Spring washer	14、轴承 / Anti-friction bearing
5、输入法兰 / Input flange	15、孔用挡圈 / Hole-circlip
6、内六角螺栓 / Hex screw	16、闷盖/Blank cap
7、O型圈 / O-rings	17、轴承 / Anti-friction bearing
8、调整垫片 / Shim ring	18、蜗轮 / Worm wheel
9、轴承 / Anti-friction bearing	19、O型圈 / O-rings
10、孔输入蜗杆 / Hole input worm	20、输出端盖 / Output cover

### 选型指南 Selection guide

- 1、本系列减速器为普通设计，供在环境温度不超过-10℃~+40℃,海拔不超过1000米的场合下使用，超出此范围须要咨询我公司技术部门。
- 2、订货时，根据需要的转速、转矩和工作系数合理选择机型，工作系数的选择见下表，工作转矩乘以工作系数即为减速器应有的转矩。写明型号，注明安装型式。如配电机或特殊订货，请注明并与本公司协商。
- 3、选择带无级变速器的机型，为充分显示本机型的优良特性，常用转速应选择变速范围的中间值。
- 4、带无级变速器的机型，严禁停机调速。
- 5、订货时请尽量选择本目录内的标准产品，如果有特殊要求，请在合同上详细说明；如需要单向或双向输出轴以及电机接线盒规定位置时均须注明清楚。
- 6、减速器使用的润滑油参照有关润滑油章节；无级变速器使用的润滑油为：Ub-3无级专用油。
- 7、减速器应装在有遮篷的交通工具上运输，在运输过程中要防止野蛮装卸，应避免剧烈的碰撞和抛掷，在储运和储存过程中，须注意防潮。
- 8、验收发现包装箱损坏时要仔细检查，确实未损坏才可投入使用。
- 9、减速器应储存在通风干燥的地方，应避免与腐蚀性的物品共储，储存超过一年应检查油封的密封性能及电机绝缘性能，合格后方可使用。
- 10、本厂负责维修指导。

1. The reducer series is universal designed, suitable with ambient temperature  $-10^{\circ}\text{C} \sim +40^{\circ}\text{C}$  and altitude  $<1000\text{M}$ . please consult the engineer department if the application beyond this situations.
2. Please select the right reducer type as the request speed, torque and service factor. Service factor is bel-ow. Reducer torque=working torque service factor. Remark the model, mounting pattern, please consult if you re-request motor or others.
3. To make sure the reducer's good specifications, the normal speed of worm gearbox with variator is better to be median of the varying range.
4. Don't adjust the speed of reducers combination with variator.
5. Please remark on the contract if you have special request, we suggest to select the standard type. Please note clearly if you need single or double output shaft or request the motor joint box place.
6. Please select the lubricant as the lubricant table; the lubricant of variator is: Ub-3.
7. Transport the reducer with awning, do not load and unload violently, avoid crash and throw, protect from d-amp.
8. Please check the reducer specification before using if the packing is broken.
9. Stock in the ventilated and dry places, avoid corrosion. Please check the oil seal, the insulation of motor if the stock more than 1 year before using.
10. We are responsible for maintenance.

**工作系数 Service factor table**

均衡负荷、连续运转、无正反转、惯性小  
Steady load, continuous running, no change direction of operation, weak inertia

每天工作时间 working time per day	启动频率(次/小时) Start-up frequency(Starts/hour)										
	5	10	20	30	40	50	60	70	80	90	100
2小时	0.8	0.81	0.83	0.86	0.88	0.9	0.92	0.94	0.96	0.98	1
8小时	1	1.01	1.03	1.06	1.08	1.1	1.12	1.14	1.16	1.18	1.2
16小时	1.2	1.21	1.23	1.26	1.28	1.3	1.32	1.34	1.36	1.38	1.4
24小时	1.5	1.51	1.53	1.56	1.58	1.6	1.62	1.64	1.66	1.68	1.7

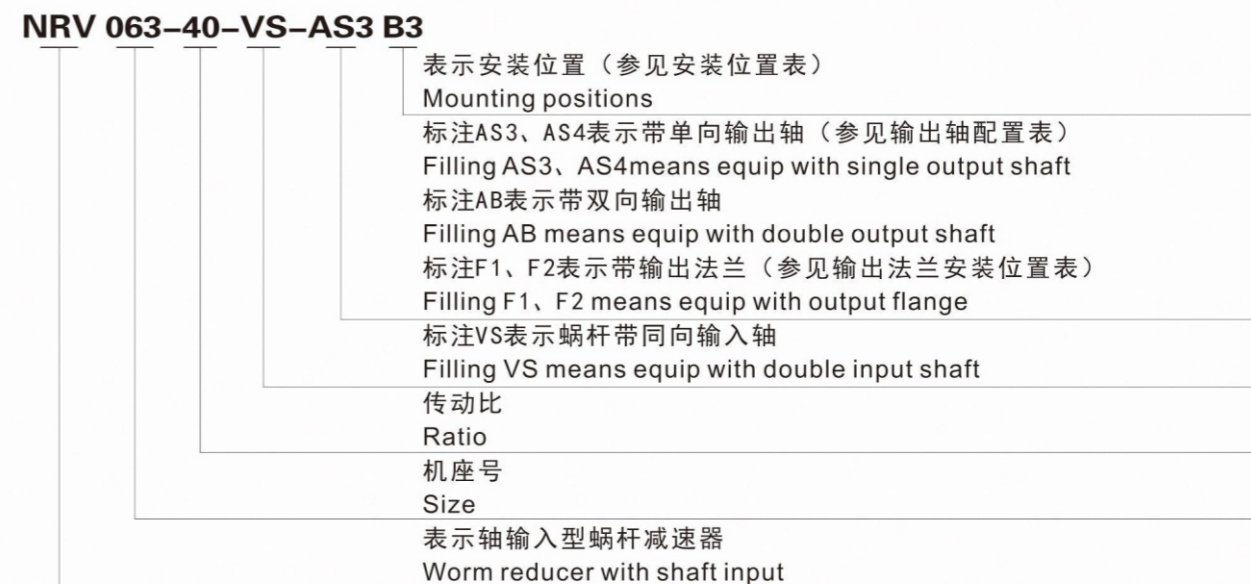
轻微冲击、间隙运动或有正反转、惯性适中  
Moderate shocks or intermission movement or direction change, general inertia

每天工作时间 working time per day	启动频率(次/小时) Start-up frequency(Starts/hour)										
	5	10	20	30	40	50	60	70	80	90	100
2小时	1	1.02	1.04	1.07	1.09	1.12	1.15	1.17	1.2	1.22	1.25
8小时	1.2	1.22	1.24	1.27	1.29	1.31	1.35	1.37	1.4	1.42	1.45
16小时	1.4	1.42	1.44	1.47	1.49	1.52	1.55	1.57	1.6	1.62	1.65
24小时	1.7	1.72	1.74	1.77	1.79	1.82	1.85	1.87	1.9	1.92	1.95

较大冲击、间隙运动或有正反转、惯性大  
Heavy shocks or intermission movement or direction change, stronger inertia

每天工作时间 working time per day	启动频率(次/小时) Start-up frequency(Starts/hour)										
	5	10	20	30	40	50	60	70	80	90	100
2小时	1.2	1.22	1.25	1.28	1.31	1.34	1.38	1.4	1.44	1.47	1.5
8小时	1.4	1.42	1.45	1.48	1.51	1.54	1.58	1.6	1.64	1.67	1.7
16小时	1.6	1.62	1.65	1.68	1.71	1.74	1.78	1.8	1.84	1.82	1.9
24小时	1.9	1.92	1.95	1.98	2.01	2.04	2.08	2.1	2.1	2.17	2.2

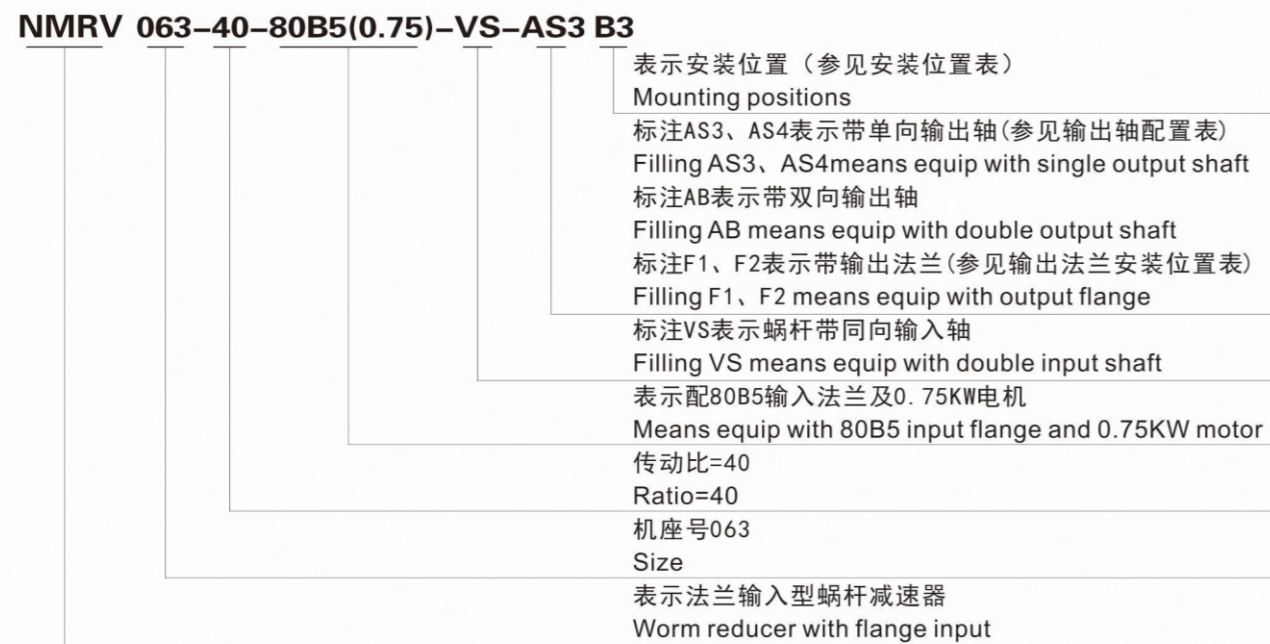
**型号表示 (一) Model representation (一)**

**示例 Example**


型号表示 (二) Model representation(二)

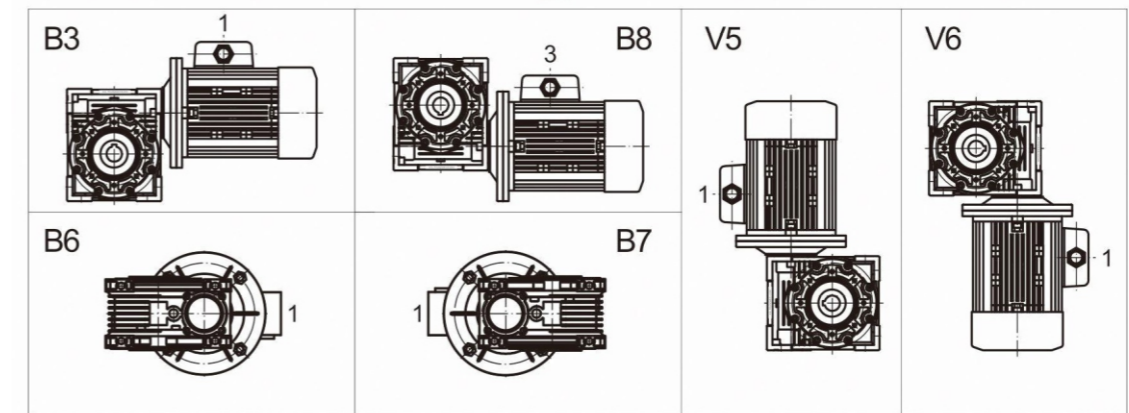


示例 Example

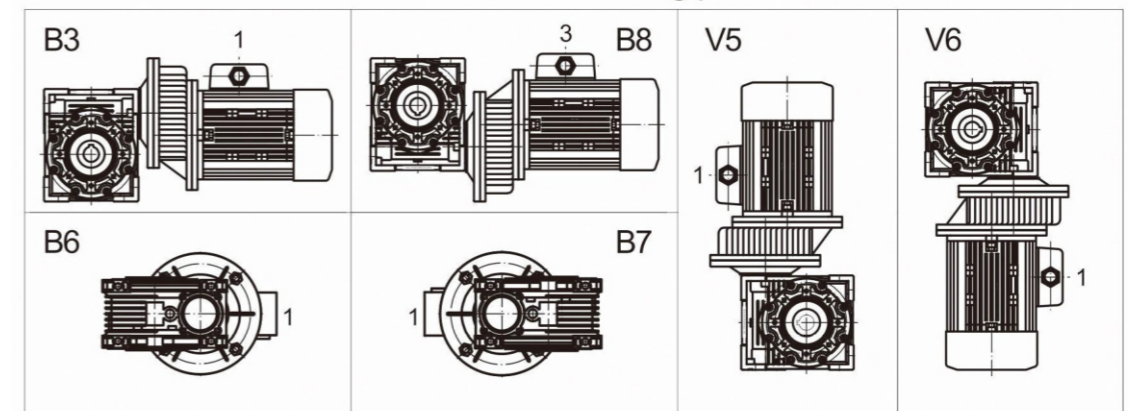


安装位置 Mounting position

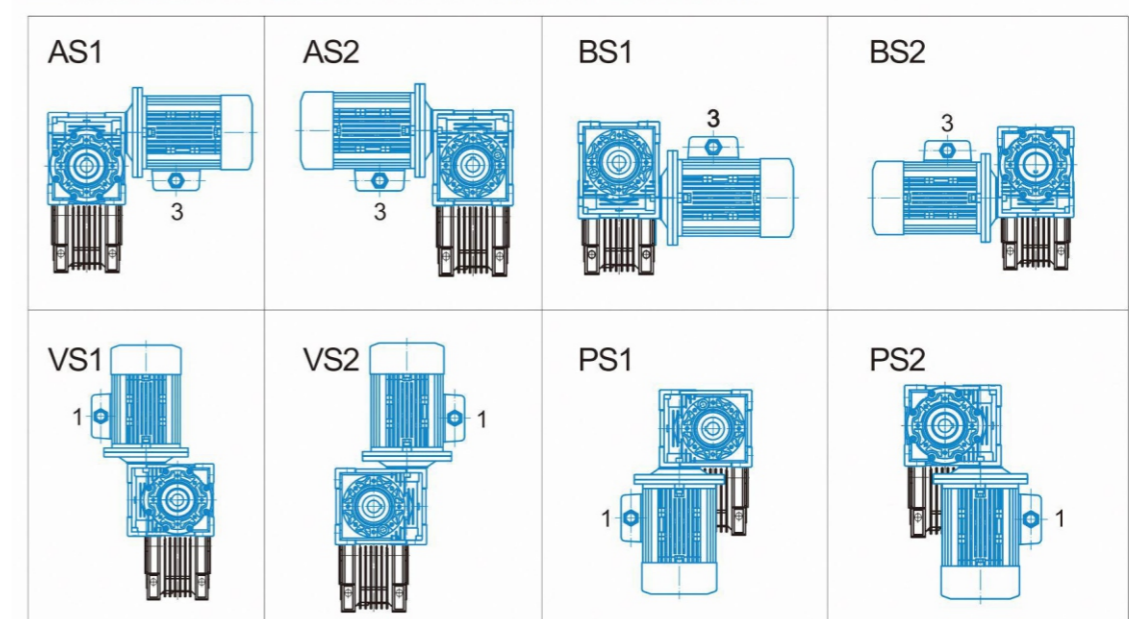
NMRV安装位置表 NMRV Mounting positions



PC+NMRV安装位置表 PC+NMRV Mounting positions

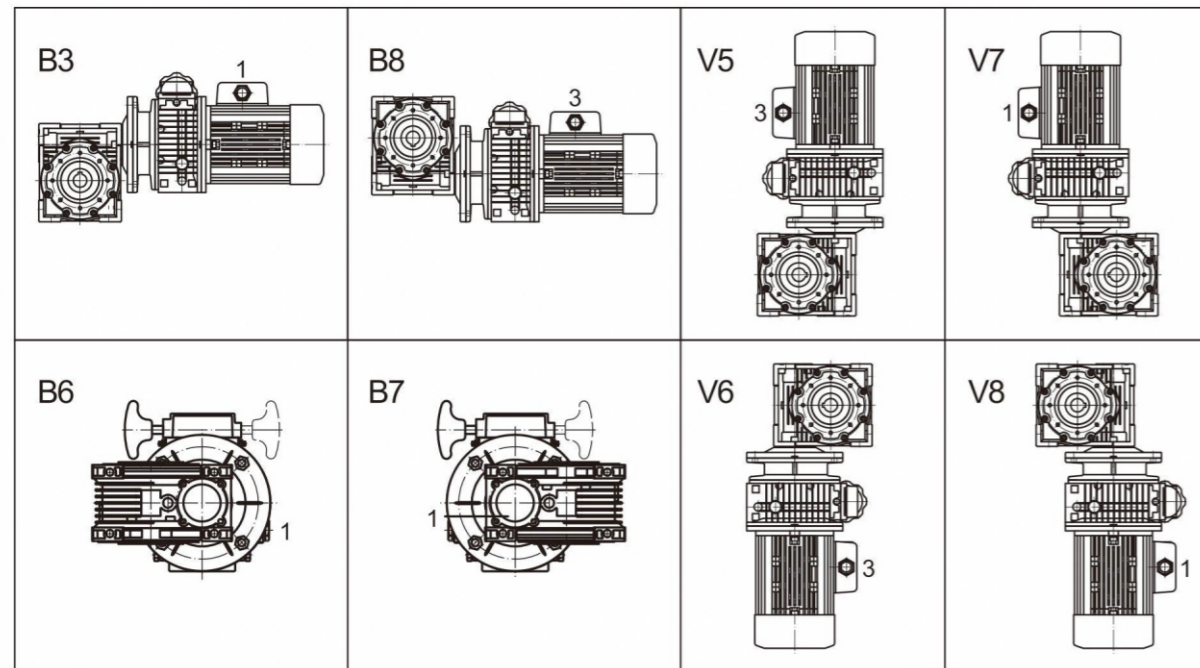


二级减速器安装位置表 NMRV+NMRV Execution

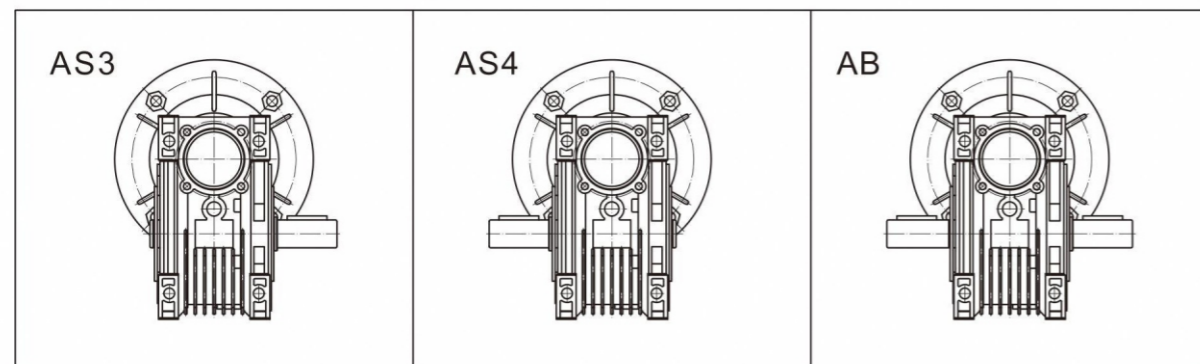


● 安装位置 Mounting position

NMRV+无级调速器安装位置表 NMRV+Variator mounting position



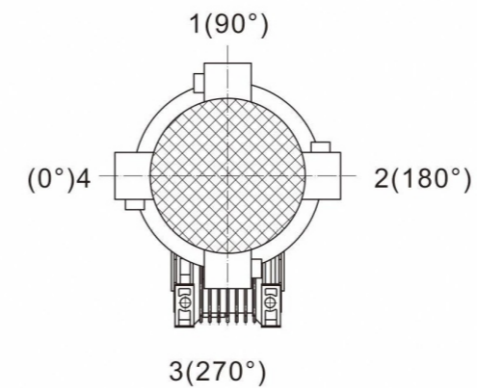
输出轴配置表 Position of output shaft



输出法兰安装位置表 Output flange installations

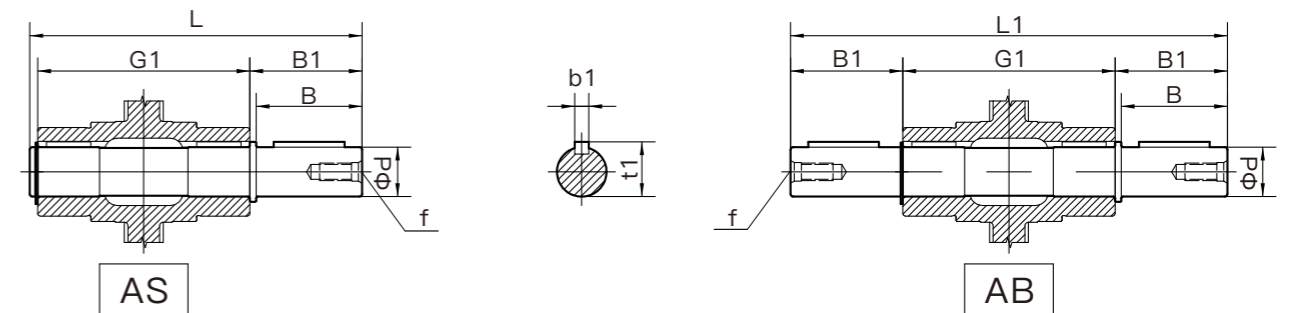


电机接线盒位置图(从电机风扇罩看)  
Motor thermal box position (viewed from fan cowl of motor)



● 附件 Appendage

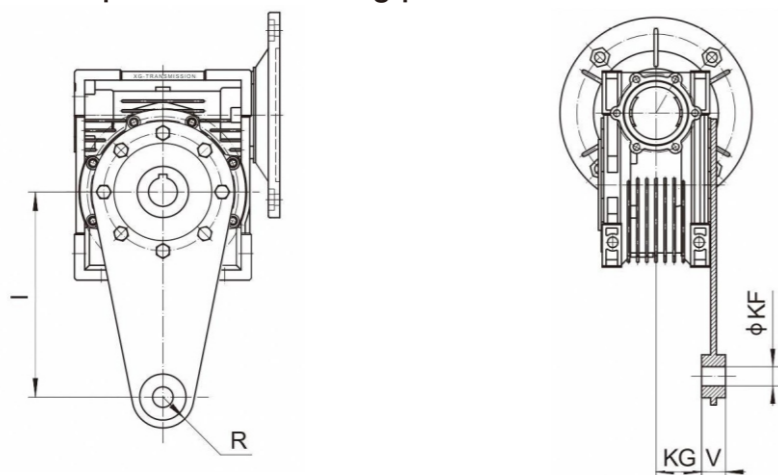
输出轴尺寸图 Output Shafts Dimensions



输出轴尺寸表 Output Shafts Size Table

	d	B	B1	G1	L	L1	f	b1	t1
030	14	30	32.5	63	101	128	M6X16	5	16
040	18/19	40	43	78	126	164	M6X16	6	20.5/21.5
050	25	50	53.5	92	150	199	M8X16	8	28
063	25	50	53.5	112	170	219	M8X16	8	28
075	28	60	63.5	120	188	247	M10X16	8	31
090	35	80	84.5	140	230	309	M12X24	10	38
105	42	80	84.5	155	245	324	M12X25	12	45
110	42	80	84.5	155	245	324	M12X25	12	45
130	45	80	85	168	259	340	M12X25	14	48.5
150	50	82	87	200	295	374	M16X30	14	53.5

扭力臂配置尺寸图 Torque arm mounting position Dimensions

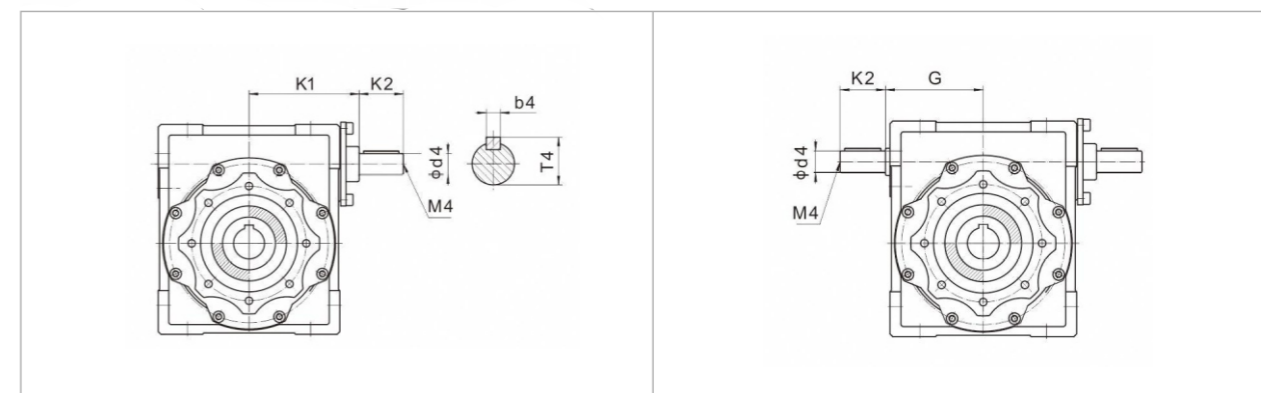


扭力臂尺寸表 Torque arm Size Table

机座号	030	040	050	063	075	090	105	110	130	150
I	85	100	100	150	200	200	250	250	250	250
R	15	18	18	18	30	30	35	35	35	35
V	14	14	14	14	25	25	30	30	30	30
KF	8	10	10	10	20	20	25	25	25	25
KG	24	31.5	38.5	49	47.5	57.5	62	62	69	84

输入形式 Input mode

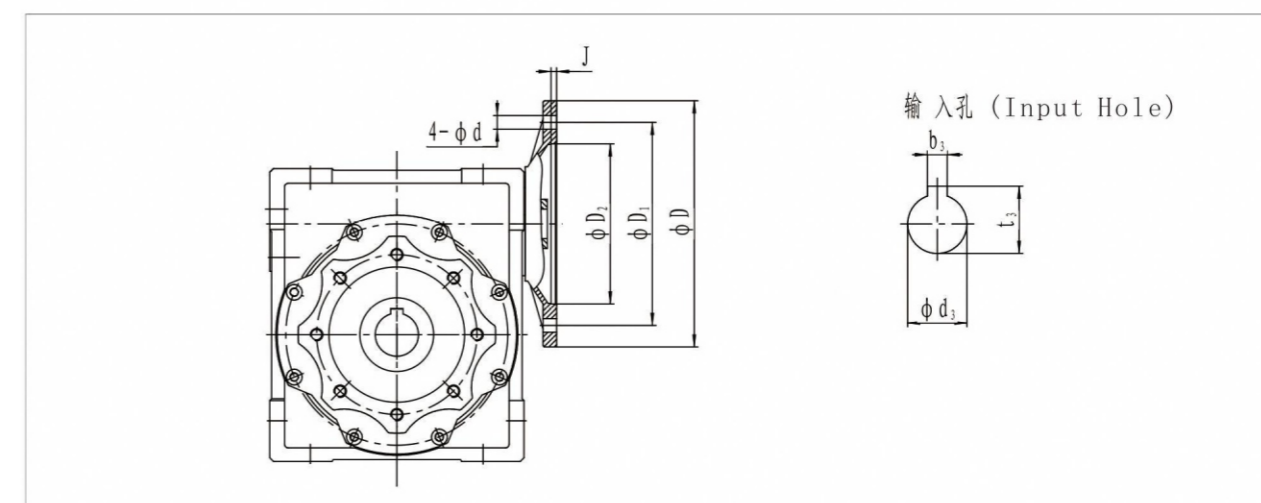
NRV蜗杆减速器外形图  
NRV External outline dimensional drawing



输入轴及VS蜗杆同向输入轴尺寸表  
Input shaft vs worm coaxial input size table

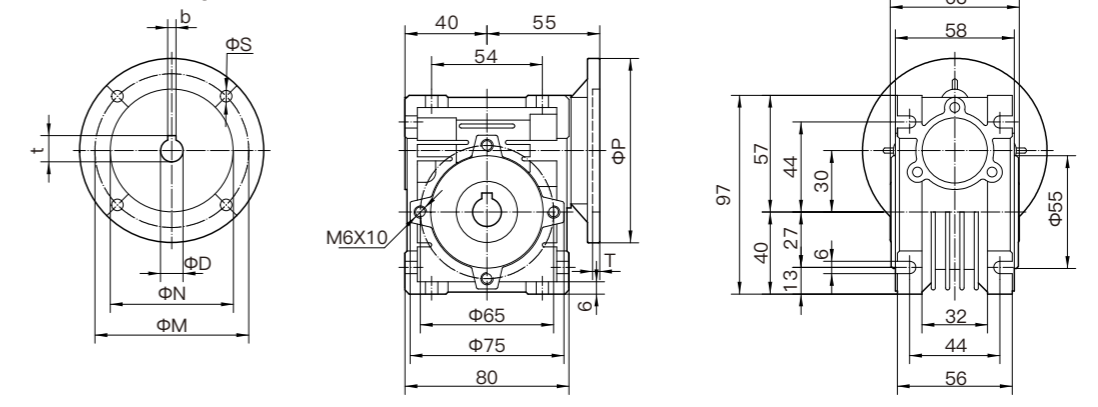
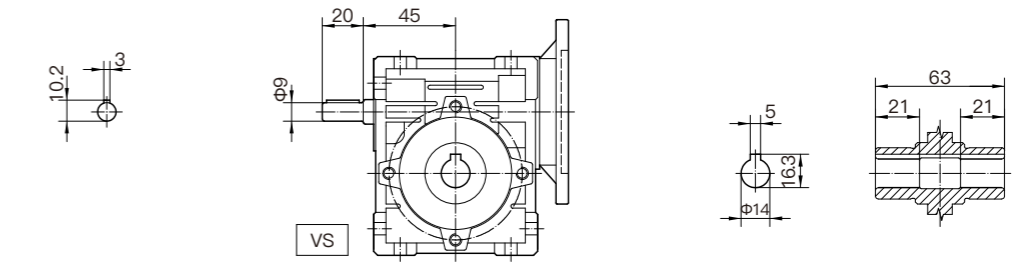
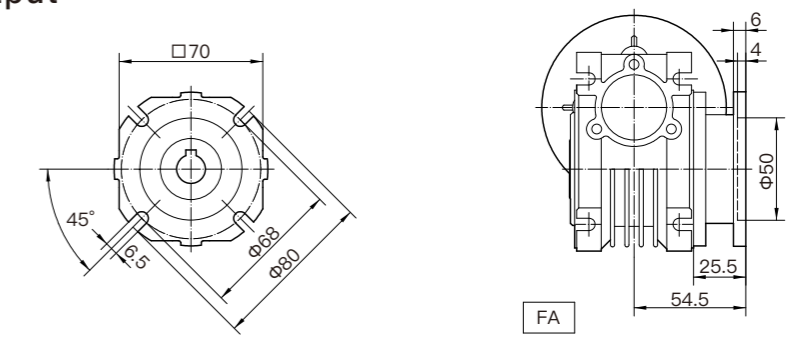
机座号	030	040	050	063	075	090	105	110	130	150
K1	50	60	74	87	105	125	142	142	162	195
K2	20	23	30	40	50	50	60	60	80	80
G	45	53	64	75	90	108	135	135	155	175
d4	9	11	14	19	24	24	28	28	30	35
b4	3	4	5	6	8	8	8	8	8	10
t4	10.2	12.5	16	21.5	27	27	31	31	33	38
M4	--	M5x10	M6x12	M8x16	M10x20	M10x20	M10x20	M10x20	M10x20	M12x20

输入法兰尺寸图  
Input flange dimension



**输入法兰尺寸表 Input flange dimension**

机座号 Base NO	输入法兰型号 Input flange types	D	D <sub>1</sub>	D <sub>2</sub>	d	j	d <sub>3</sub>										b <sub>3</sub>	t <sub>3</sub>			
							5	7.5	10	15	20	25	30	40	50	60			80	100	
030	63B5	140	115	95	9	4	11	11	11	11	11	11	11	11	11	11	-	-	4	12.8	
	63B14	90	75	60	5.5	3.5	11	11	11	11	11	11	11	11	11	11	-	-	4	12.8	
	56B5	120	100	80	7	4	9	9	9	9	9	9	9	9	9	9	9	9	3	10.4	
	56B14	80	65	50	5.5	3.5	9	9	9	9	9	9	9	9	9	9	9	9	3	10.4	
040	71B5	160	130	110	9	4.5	14	14	14	14	14	14	14	14	14	-	-	-	5	16.3	
	71B14	105	85	70	7	4.5	14	14	14	14	14	14	14	14	14	14	14	14	5	16.3	
	63B5	140	115	95	9	4	11	11	11	11	11	11	11	11	11	11	11	11	4	12.8	
	63B14	90	75	60	5.5	3.5	11	11	11	11	11	11	11	11	11	11	11	11	4	12.8	
050	56B5	120	100	80	7	4	-	-	-	-	-	-	-	-	9	9	9	9	4	10.4	
	80B5	200	165	130	12	6	19	19	19	19	19	19	19	-	-	-	-	-	6	21.8	
	80B14	120	100	80	7	6	19	19	19	19	19	19	19	-	-	-	-	-	6	21.8	
	71B5	160	130	110	9	4.5	14	14	14	14	14	14	14	14	14	14	14	-	5	16.3	
063	71B14	105	85	70	7	4.5	14	14	14	14	14	14	14	14	14	14	14	14	5	16.3	
	63B5	140	115	95	9	4	-	-	-	-	-	-	-	11	11	11	11	11	4	12.8	
	90B5	200	165	130	12	6	24	24	24	24	24	24	24	-	-	-	-	-	8	27.3	
	90B14	140	115	95	9	6	24	24	24	24	24	24	24	-	-	-	-	-	8	27.3	
075	80B5	200	165	130	12	6	19	19	19	19	19	19	19	19	19	19	19	19	6	21.8	
	80B14	120	100	80	7	6	19	19	19	19	19	19	19	19	19	19	19	19	6	21.8	
	71B5	160	130	110	9	4.5	-	-	-	-	-	-	-	14	14	14	14	14	5	16.3	
	71B14	105	85	70	7	4.5	-	-	-	-	-	-	-	14	14	14	14	14	5	16.3	
090	100/112B5	250	215	180	14	6	-	28	28	28	28	28	28	28	28	-	-	-	-	8	31.3
	100/112B14	160	130	110	9	4.5	-	28	28	28	28	28	28	28	28	-	-	-	-	8	31.3
	90B5	200	165	130	12	6	-	24	24	24	24	24	24	24	24	24	24	-	-	8	27.3
	90B14	140	115	95	9	6	-	24	24	24	24	24	24	24	24	24	24	-	-	8	27.3
105	80B5	200	165	130	12	6	-	-	-	-	-	-	-	19	19	19	19	19	6	21.8	
	80B14	120	100	80	7	6	-	-	-	-	-	-	-	19	19	19	19	19	6	21.8	
	132B5	300	265	230	14	6	-	38	38	38	38	38	38	-	-	-	-	-	8	41.3	
	100/112B5	250	215	180	14	6	-	28	28	28	28	28	28	28	28	28	28	28	-	8	31.3
110	100/112B14	160	130	110	9	6	-	28	28	28	28	28	28	28	28	28	28	28	-	8	31.3
	90B5	200	165	130	12	6	-	-	-	-	-	-	24	24	24	24	24	24	8	27.3	
	80B5	200	165	130	12	6	-	-	-	-	-	-	-	-	-	-	19	19	6	21.8	
	80B14	120	100	80	7	6	-	-	-	-	-	-	-	-	-	-	19	19	6	21.8	
130	132B5	300	265	230	14	6	-	38	38	38	38	38	38	-	-	-	-	-	10	41.3	
	100/112B5	250	215	180	14	6	-	28	28	28	28	28	28	28	28	28	28	28	-	8	31.3
	100/112B14	160	130	110	9	6	-	28	28	28	28	28	28	28	28	28	28	28	-	8	31.3
	90B5	200	165	130	12	6	-	-	-	-	-	-	-	-	-	-	24	24	8	27.3	
150	160B5	350	300	250	19	6	-	42	42	42	42	42	42	-	-	-	-	-	12	45.3	
	132B5	300	265	230	14	6	-	-	-	-	38	38	38	38	38	38	38	38	10	41.3	
	100/112B5	250	215	180	14	6	-	-	-	-	-	-	-	-	28	28	28	28	8	31.3	

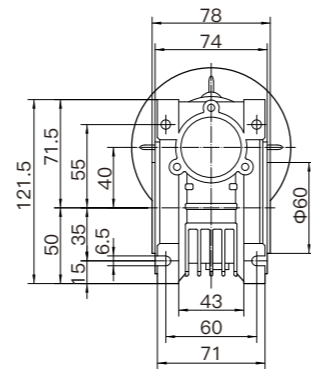
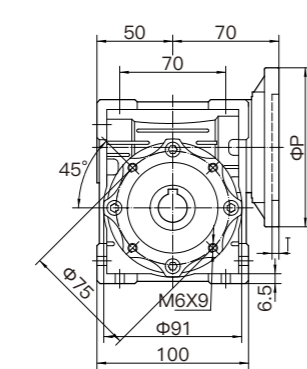
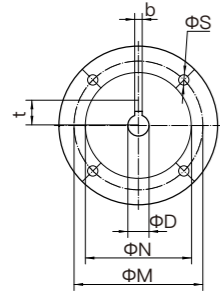
**NMRV外型尺寸图 NMRV outline dimensional drawing**
**NMRV030外型尺寸图 NMRV030 outline dimensional drawing**
**孔输入 Hole input**

**孔轴输入 Hole shaft input**

**法兰输出 Flange output**


IEC	D	b	t	P	M	N	S	T
56B5	9	3	10.4	120	100	80	7	4
56B14	9	3	10.4	80	65	50	5.5	3.5
63B5	11	4	12.8	140	115	95	9	4
63B14	11	4	12.8	90	75	60	5.5	3.5

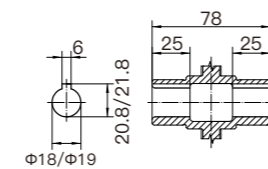
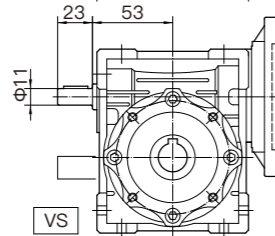
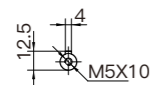
 重量(不包括马达)~1.2kg  
 Weight without motor≈1.2kg

NMRV040外型尺寸图 NMRV040 outline dimensional drawing

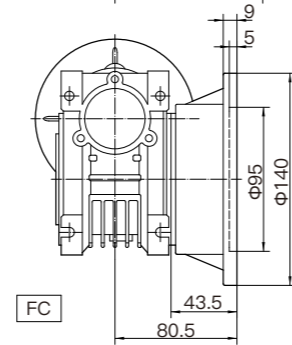
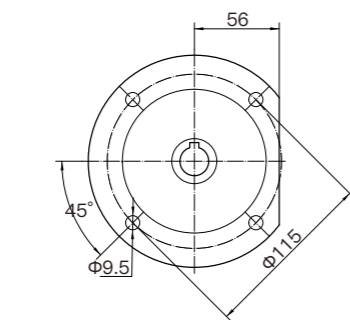
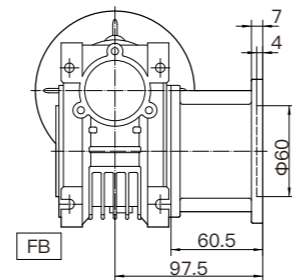
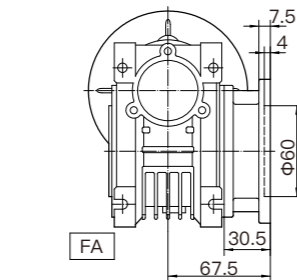
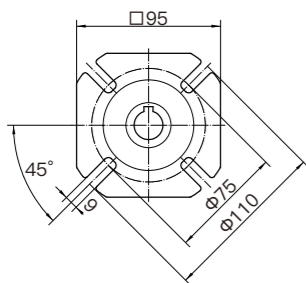
孔输入 Hole input



孔轴输入 Hole shaft input



法兰输出 Flange output

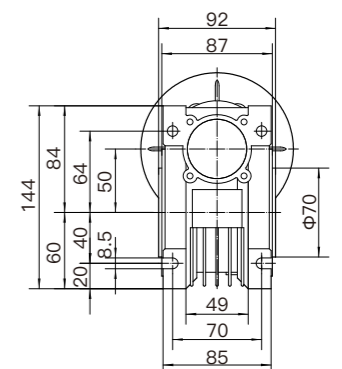
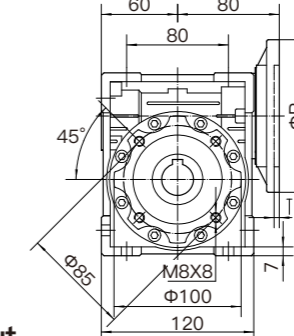
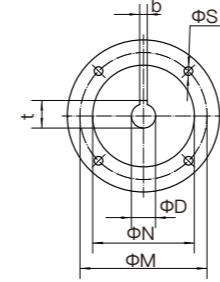


IEC	D	b	t	P	M	N	S	T
56B5	9	3	10.4	120	100	80	7	4
63B5	11	4	12.8	140	115	95	9	4
63B14	11	4	12.8	90	75	60	5.5	3.5
71B5	14	5	16.3	160	130	110	9	4.5
71B14	14	5	16.3	105	85	70	7	4

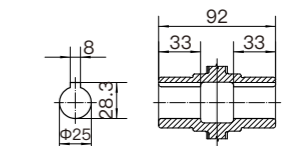
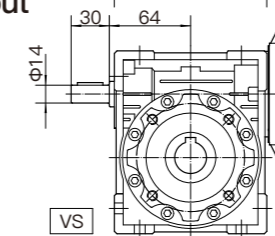
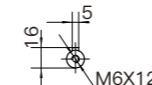
重量(不包括马达)~2.3kg  
Weight without motor≈2.3kg

NMRV050外型尺寸图 NMRV050 outline dimensional drawing

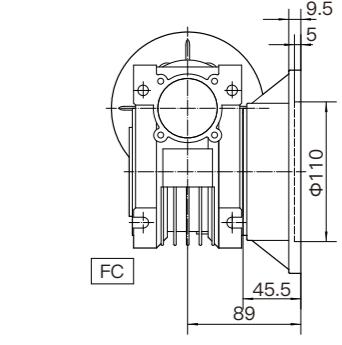
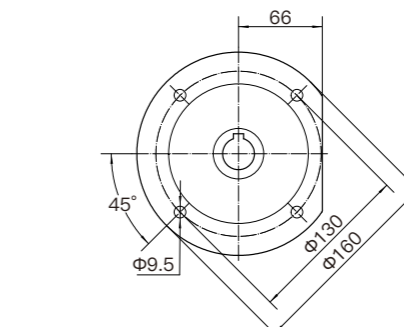
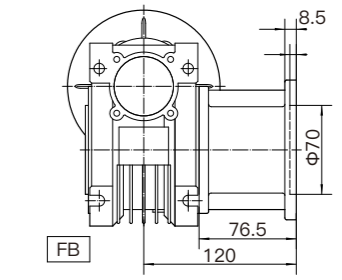
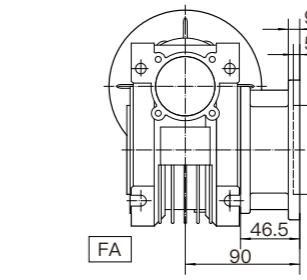
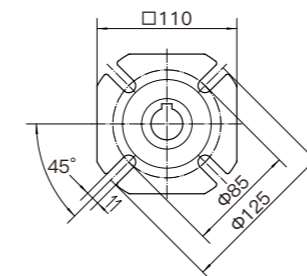
孔输入 Hole input



孔轴输入 Hole shaft input



法兰输出 Flange output



IEC	D	b	t	P	M	N	S	T
63B5	11	4	12.8	140	115	95	9	4
71B5	14	5	16.3	160	130	110	9	4.5
71B14	14	5	16.3	105	85	70	7	4
80B5	19	6	21.8	200	165	130	11	4.5
80B14	19	6	21.8	120	100	80	7	4

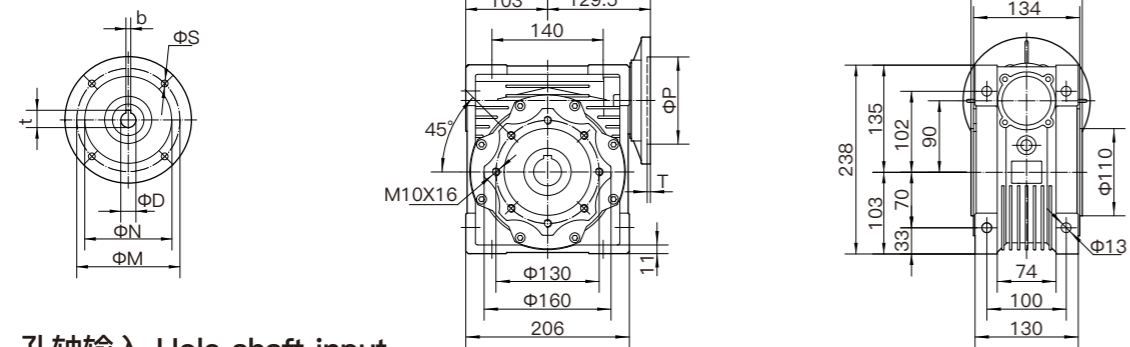
重量(不包括马达)~3.5kg  
Weight without motor≈3.5kg



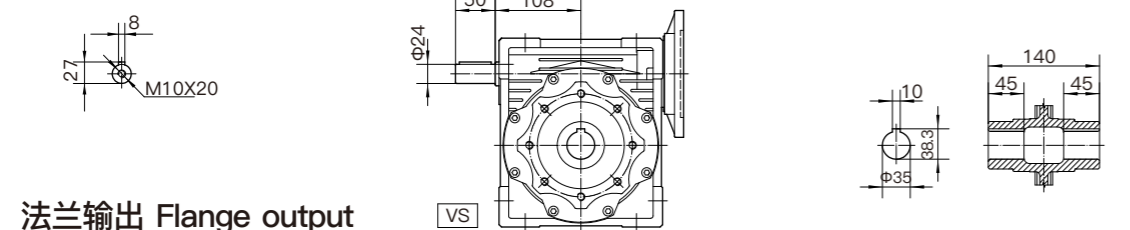
NMRV外型尺寸图 NMRV outline dimensional drawing

NMRV090外型尺寸图 NMRV090 outline dimensional drawing

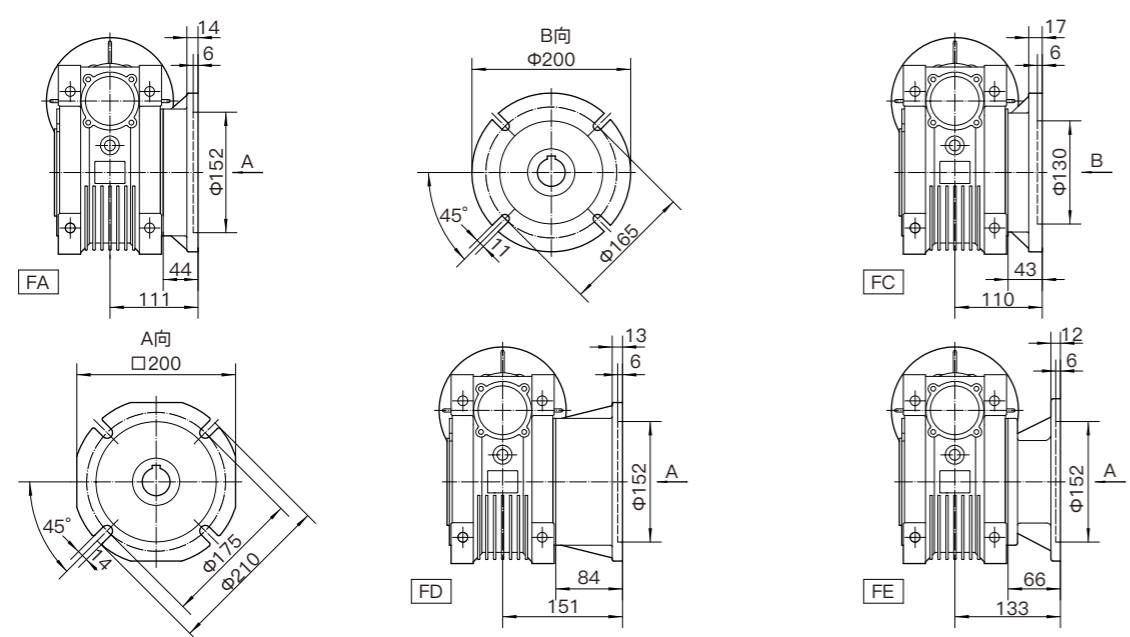
孔输入 Hole input



孔轴输入 Hole shaft input



法兰输出 Flange output

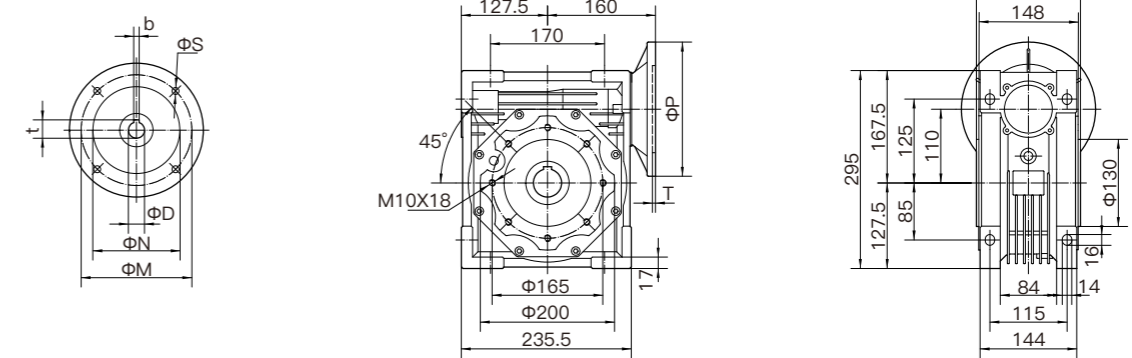


IEC	D	b	t	P	M	N	S	T
80B5	19	6	21.8	200	165	130	11	4.5
80B14	19	6	21.8	120	100	80	7	4
90B5	24	8	27.3	200	165	130	11	4.5
90B14	24	8	27.3	140	115	95	9	4.5
100/112B5	28	8	31.3	250	215	180	14	5
100/112B14	28	8	31.3	160	130	110	9	4.5

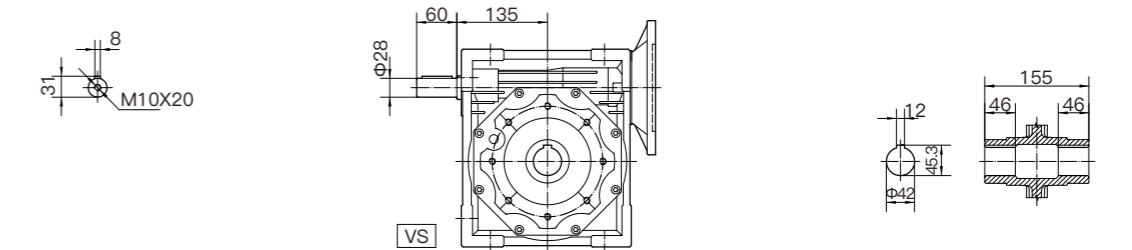
重量(不包括马达)~13kg  
Weight without motor≈13kg

NMRV105外型尺寸图 NMRV105 outline dimensional drawing

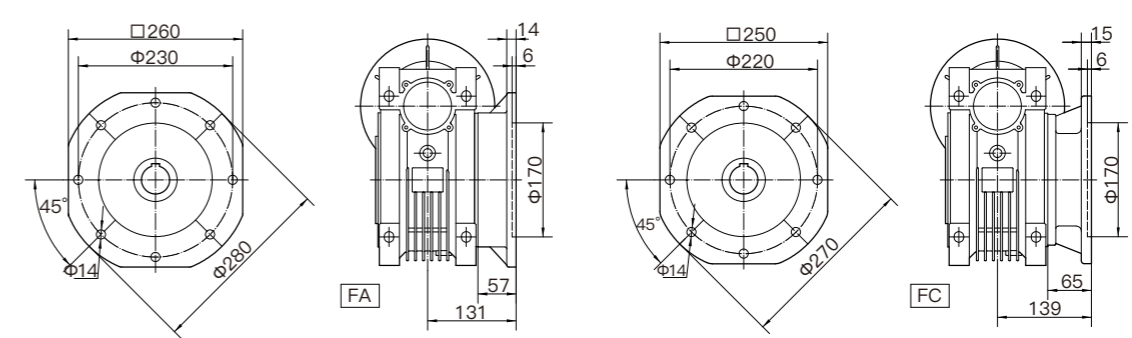
孔输入 Hole input



孔轴输入 Hole shaft input



法兰输出 Flange output



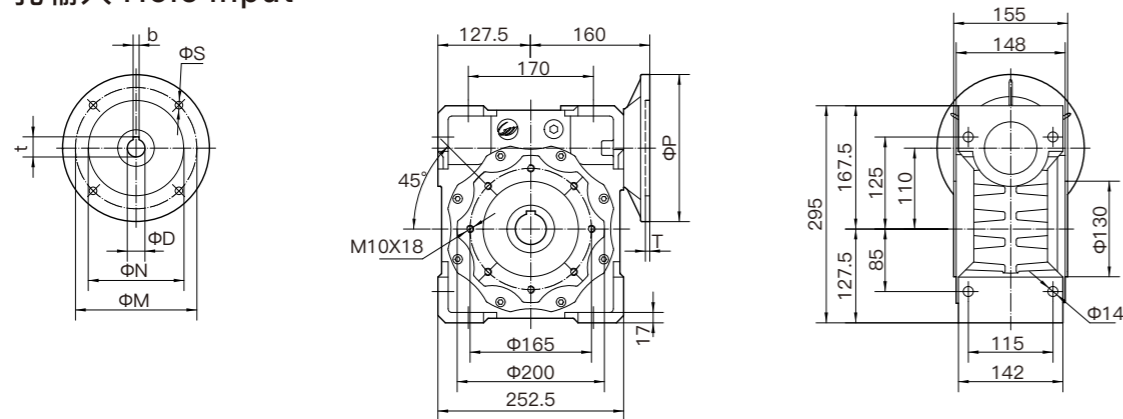
IEC	D	b	t	P	M	N	S	T
80B5	19	6	21.8	200	165	130	11	4.5
90B5	24	8	27.3	200	165	130	11	4.5
100/112B5	28	8	31.3	250	215	180	14	5
100/112B14	28	8	31.3	160	130	110	9	4.5
132B5	38	10	41.3	300	265	230	14	5

重量(不包括马达)~17kg  
Weight without motor≈17kg

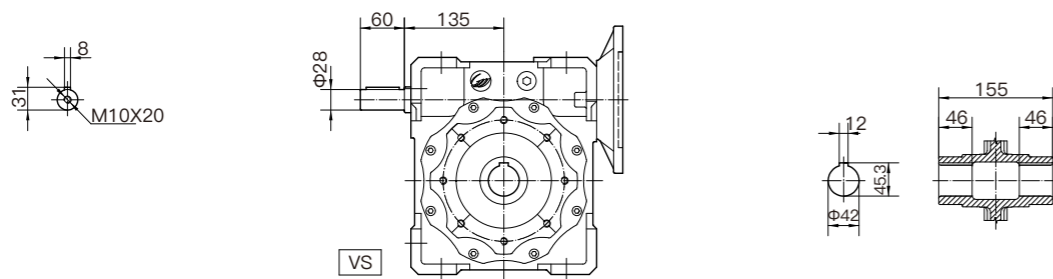
NMRV外型尺寸图 NMRV outline dimensional drawing

NMRV110外型尺寸图 NMRV110 outline dimensional drawing

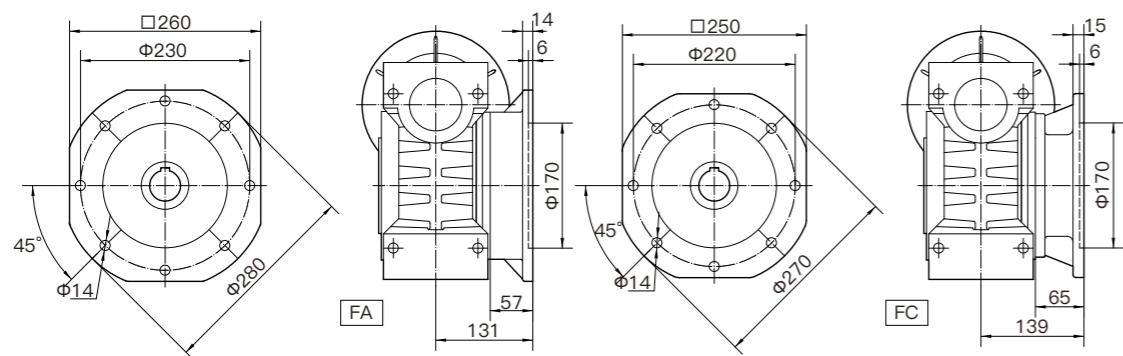
孔输入 Hole input



孔轴输入 Hole shaft input



法兰输出 Flange output

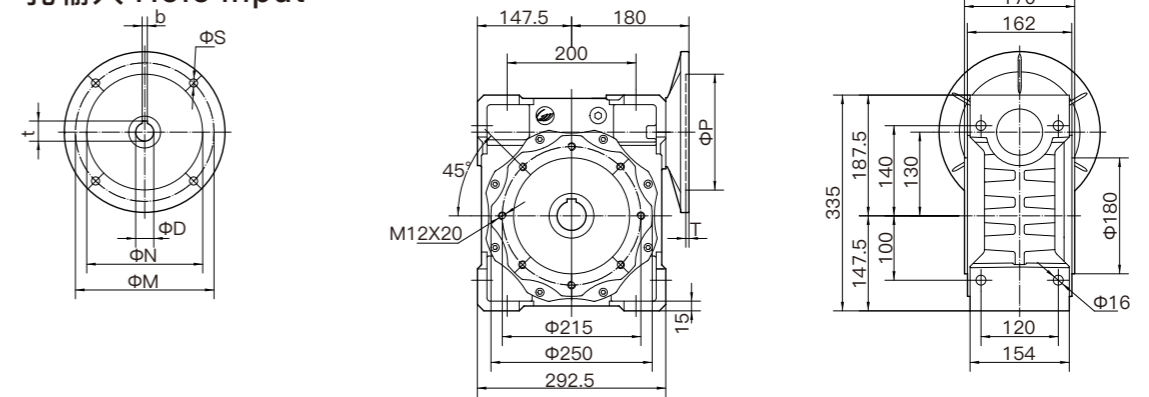


IEC	D	b	t	P	M	N	S	T
80B5	19	6	21.8	200	165	130	11	4.5
90B5	24	8	27.3	200	165	130	11	4.5
100/112B5	28	8	31.3	250	215	180	14	5
100/112B14	28	8	31.3	160	130	110	9	4.5
132B5	38	10	41.3	300	265	230	14	5

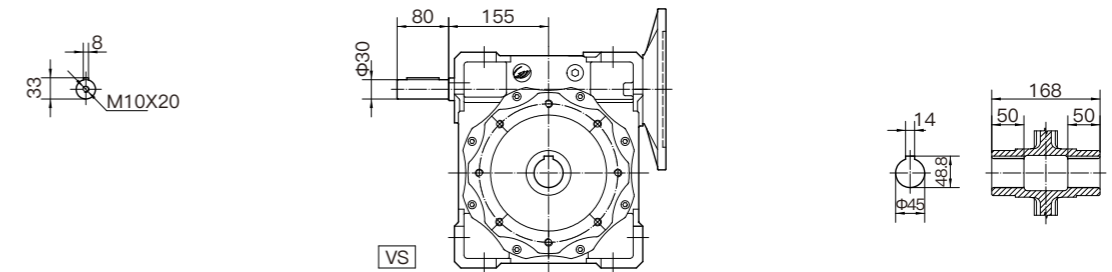
重量(不包括马达)~39kg  
Weight without motor ≈ 39kg

NMRV130外型尺寸图 NMRV130 outline dimensional drawing

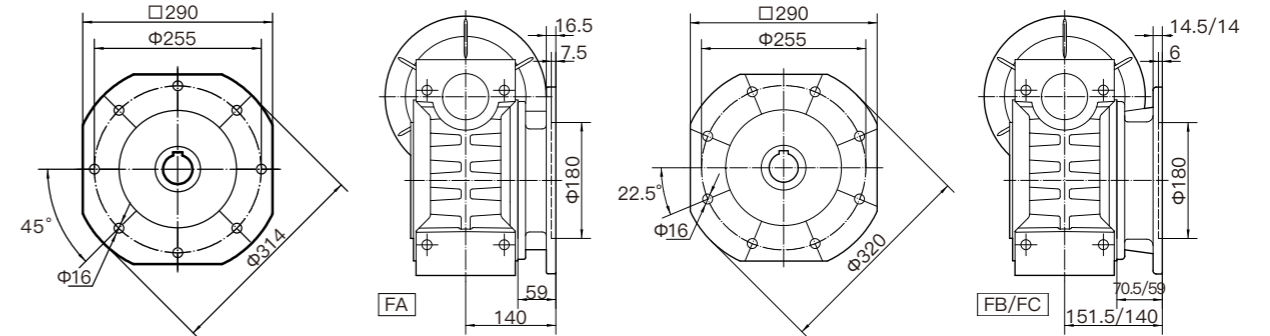
孔输入 Hole input



孔轴输入 Hole shaft input

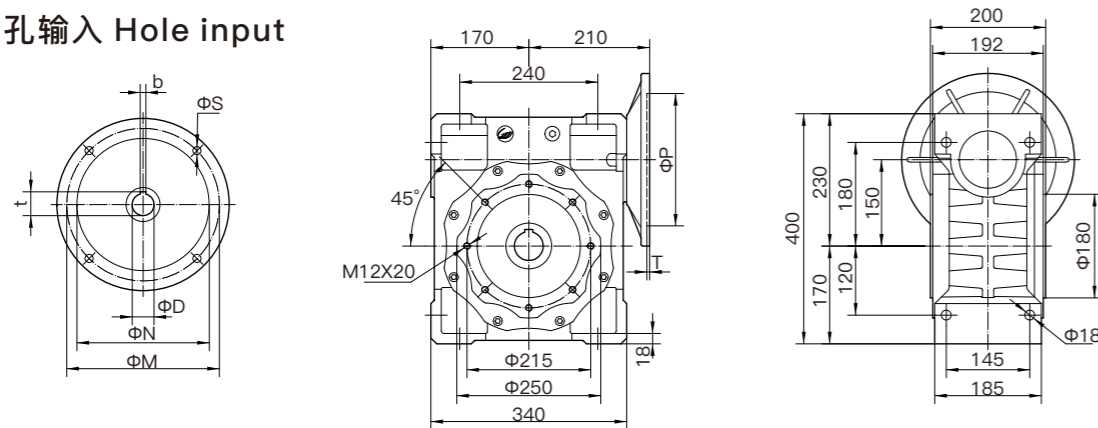
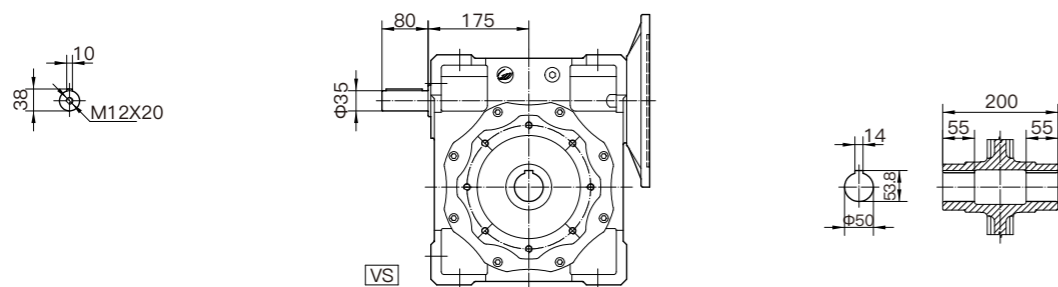
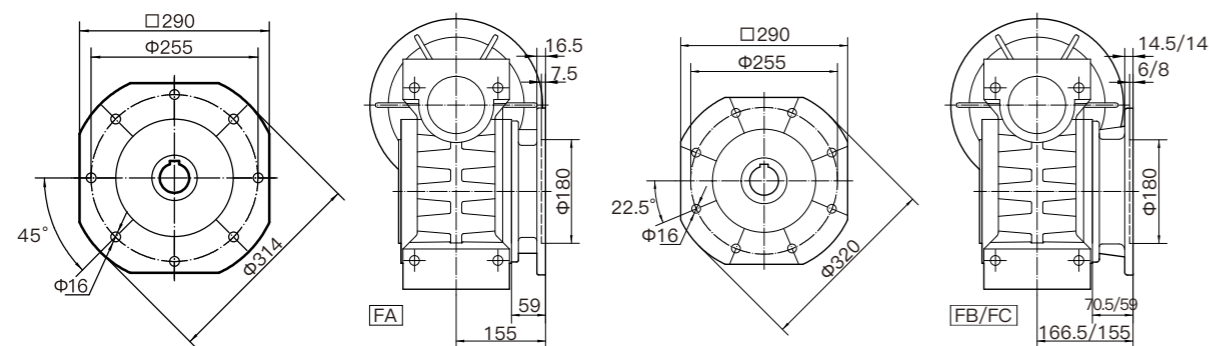


法兰输出 Flange output



IEC	D	b	t	P	M	N	S	T
90B5	24	8	27.3	200	165	130	11	4.5
100/112B5	28	8	31.3	250	215	180	14	5
100/112B14	28	8	31.3	160	130	110	9	4.5
132B5	38	10	41.3	300	265	230	14	5

重量(不包括马达)~51kg  
Weight without motor ≈ 51kg

**NMRV外型尺寸图 NMRV outline dimensional drawing**
**NMRV150外型尺寸图 NMRV150 outline dimensional drawing**
**孔输入 Hole input**

**孔轴输入 Hole shaft input**

**法兰输出 Flange output**


IEC	D	b	t	P	M	N	S	T
100/112B5	28	8	31.3	250	215	180	14	5
132B5	38	10	41.3	300	265	230	14	5
160B5	42	12	45.3	350	300	250	19	6

重量(不包括马达)~78kg  
 Weight without motor ≈ 78kg

**减速器选型表 Gear unit selection tables**

功率 Motor power	输出转速 Output speed	输出转矩 Output torque	公称传动比 Nominal speed ratio	输出轴 径向载荷 The output shaft Radial load	使用系数 Service Factor	减速机型号 Gear reducer model	电机型号 Motor type	
$P_{1n}$	$n_2$	$M_{2n}$	$i$	$F_{r2}$	$f_s$			
[KW]	[r/min]	[N.m]		[N]				
0.06	280	1.8	5	597	10	NMRV030	56B5/B14	5614
	186.7	2.6	7.5	683	7.0			
	140	3.3	10	752	5.4			
	93.3	4.7	15	861	3.9			
	70	5.9	20	948	3.1			
	56	6.8	25	1021	3.1			
	46.7	7.9	30	1085	2.5			
	35	9.7	40	1194	1.9			
	28	11	50	1286	1.5			
	23.3	12	60	1367	1.3			
0.09	280	2.7	5	597	6.1	NMRV030	56B5/B14	5624
	186.7	3.9	7.5	683	4.7			
	140	5	10	752	3.6			
	93.3	7	15	861	2.6			
	70	8.8	20	948	2.0			
	56	10	25	1021	2.1			
	46.7	12	30	1085	1.7			
	35	14	40	1194	1.2			
	28	17	50	1286	1.0			
	23.3	18	60	1367	0.9			
0.12	280	3.6	5	597	5.1	NMRV040	56B5	6314
	186.7	5.2	7.5	683	3.5			
	140	6.6	10	752	2.7			
	93.3	9.3	15	861	1.9			
	70	12	20	948	1.5			
	56	14	25	1021	1.6			
	46.7	16	30	1085	1.3			
	35	19	40	1194	0.9			
	28	22	50	1286	0.8			

**减速器选型表 Gear unit selection tables**

功率	输出转速	输出转矩	公称传动比	输出轴 径向载荷	使用系数	减速机型号		电机型号
Motor power	Output speed	Output torque	Nominal speed ratio	The output shaft Radial load	Service Factor	Gear reducer model		Motor type
$P_{1n}$	$n_2$	$M_{2n}$	$i$	$F_{r2}$	$f_s$			
[KW]	[r/min]	[N.m]		[N]				
0.12	46.7	17	30	2087	2.7	NMRV040	63B5/B14	6314
	35	21	40	2298	1.9			
	28	25	50	2475	1.6			
	23.3	28	60	2630	1.3			
	17.5	33	80	2895	1.0			
	14	38	100	3118	0.8			
0.18	280	5.3	5	597	3.4	NMRV030	63B5/B14	6324
	186.7	7.7	7.5	683	2.3			
	140	10	10	752	1.8			
	93.3	14	15	861	1.3			
	70	18	20	948	1.0			
	56	20	25	1021	1.0			
	46.7	24	30	1085	0.8	NMRV040	63B5/B14	
	70	19	20	1824	2.1			
	56	23	25	1964	1.7			
	46.7	25	30	2087	1.8			
	35	32	40	2298	1.3			
	28	37	50	2475	1.0			
	23.3	42	60	2630	0.9			
	45	28	20	2113	1.6			
	36	34	25	2276	1.3			
	30	38	30	2419	1.3			
	22.5	47	40	2662	1.0	NMRV050	63B5	
	35	33	40	3153	2.3			
28	39	50	3397	1.9				
23.3	43	60	3610	1.6				
17.5	52	80	3973	1.2				
14	59	100	4280	0.9	NMRV050			71B5/B14
18	56	50	3936	1.4				
15	63	60	4183	1.1				
11.3	75	80	4604	0.9				
15	66	60	5467	2.1				
11.3	79	80	6018	1.6		NMRV063	71B5/B14	
9	90	100	6270	1.4				

功率	输出转速	输出转矩	公称传动比	输出轴 径向载荷	使用系数	减速机型号		电机型号
Motor power	Output speed	Output torque	Nominal speed ratio	The output shaft Radial load	Service Factor	Gear reducer model		Motor type
$P_{1n}$	$n_2$	$M_{2n}$	$i$	$F_{r2}$	$f_s$			
[KW]	[r/min]	[N.m]		[N]				
0.25	280	8	5	1149	4.5	NMRV040	71B5/B14	7114
	186.7	11	7.5	1315	3.6			
	140	14	10	1447	2.8			
	93.3	20	15	1657	2.0			
	70	26	20	1824	1.5			
	56	32	25	1964	1.2			
	46.7	35	30	2087	1.3			
	35	44	40	2298	0.9			
	180	12	5	1331	3.5			
	120	17	7.5	1524	2.6			
	90	22	10	1677	2.0	NMRV040	71B5/B14	
	60	31	15	1920	1.4			
	45	39	20	2113	1.1			
	36	48	25	2276	0.9			
	30	53	30	2419	0.9			
	70	27	20	2503	2.7			
	56	32	25	2696	2.2			
	46.7	36	30	2865	2.3			
35	46	40	3153	1.7				
28	54	50	3397	1.4				
23.3	60	60	3610	1.1	NMRV050	71B5/B14		
17.5	72	80	3973	0.9				
45	40	20	2900	1.9				
36	48	25	3124	1.5				
30	54	30	3320	1.7				
22.5	67	40	3654	1.2			NMRV050	71B5/B14
18	78	50	3936	1.0				
15	88	60	4183	0.8				
28	55	50	4440	2.4				
23.3	63	60	4719	2.0				
17.5	76	80	5193	1.6	NMRV063	71B5/B14		
14	87	100	5595	1.4				
18	81	50	5145	1.8				
15	92	60	5467	1.5				
11.3	110	80	6018	1.2				
9	125	100	6270	1.0			NMRV063	71B5/B14

**减速器选型表 Gear unit selection tables**

功率	输出转速	输出转矩	公称传动比	输出轴 径向载荷	使用系数	减速机型号		电机型号
Motor power	Output speed	Output torque	Nominal speed ratio	The output shaft Radial load	Service Factor	Gear reducer model		Motor type
$P_{1n}$	$n_2$	$M_{2n}$	$i$	$F_{r2}$	$f_s$			
[KW]	[r/min]	[N.m]		[N]				
0.25	17.5	80	80	6130	2.4	NMRV075	71B5	7114
	14	94	100	6603	1.9			
	11.3	117	80	7103	1.7	NMRV075	71B5	7126
	9	133	100	7180	1.4			
0.37	280	11	5	1149	3.0	NMRV040	71B5/B14	7124
	186.7	16	7.5	1315	2.5			
	140	21	10	1447	1.9			
	93.3	30	15	1657	1.3			
	70	39	20	1824	1.0			
	56	47	25	1964	0.8			
	46.7	52	30	2087	0.9			
	140	21	10	1987	3.4			
	93.3	31	15	2274	2.4			
	70	39	20	2503	1.9			
	56	47	25	2696	1.5	NMRV050	71B5/B14	8016
	46.7	54	30	2865	1.6			
	35	68	40	3153	1.1			
	28	80	50	3397	0.9			
	23.3	89	60	3610	0.8			
	180	17	5	1827	4.3			
	120	25	7.5	2091	3.4			
	90	33	10	2302	2.6			
	60	47	15	2635	1.8			
	45	59	20	2900	1.3			
36	72	25	3124	1.0				
30	80	30	3320	1.1				
35	70	40	4122	2.1				
28	82	50	4440	1.6				
23.3	94	60	4719	1.4	NMRV063	71B5/B14	7124	
17.5	113	80	5193	1.1				
14	129	100	5595	0.9				
45	60	20	3791	2.4				
36	73	25	4084	1.9				
30	82	30	4339	2.1				
22.5	102	40	4776	1.6	NMRV063	80B5/B14	8016	
18	120	50	5145	1.2				
15	137	60	5467	1.0				

功率	输出转速	输出转矩	公称传动比	输出轴 径向载荷	使用系数	减速机型号		电机型号
Motor power	Output speed	Output torque	Nominal speed ratio	The output shaft Radial load	Service Factor	Gear reducer model		Motor type
$P_{1n}$	$n_2$	$M_{2n}$	$i$	$F_{r2}$	$f_s$			
[KW]	[r/min]	[N.m]		[N]				
0.37	23.3	97	60	5569	2.1	NMRV075	71B5	7124
	17.5	119	80	6130	1.6			
	14	139	100	6603	1.3	NMRV075	80B5/B14	8016
	18	124	50	6073	1.8			
	15	141	60	6453	1.5			
	11.3	173	80	7103	1.2			
	9	196	100	7380	1.0	NMRV090	80B5/B14	
	11.3	185	80	7859	1.7			
	9	212	100	8180	1.3	NMRV050	80B5/B14	8014
	280	17	5	1577	3.7			
186.7	24	7.5	1805	2.9				
140	32	10	1987	2.3				
93.3	46	15	2274	1.6				
70	59	20	2503	1.2				
56	70	25	3696	1.0				
46.7	80	30	2865	1.1				
120	37	7.5	2091	2.3				
90	48	10	2302	1.7				
60	69	15	2635	1.2	NMRV050	80B5/B14	8026	
45	88	20	2900	0.9				
70	60	20	3272	2.2				
56	72	25	3524	1.8				
46.7	82	30	3745	1.9	NMRV063	80B5/B14	8014	
35	104	40	4122	1.4				
28	122	50	4440	1.1				
23.3	140	60	4719	0.9				
60	70	15	3444	2.2	NMRV063	80B5/B14	8026	
45	90	20	3791	1.6				
36	108	25	4084	1.3				
30	123	30	4339	1.4				
22.5	152	40	4776	1.1				
35	108	40	4865	2.0				
28	128	50	5241	1.6	NMRV075	80B5/B14	8014	
23.3	144	60	5569	1.4				
17.5	177	80	6130	1.1				
14	206	100	6603	0.9				

**减速器选型表 Gear unit selection tables**

功率	输出转速	输出转矩	公称传动比	输出轴 径向载荷	使用系数	减速机型号		电机型号	
Motor power	Output speed	Output torque	Nominal speed ratio	The output shaft Radial load	Service Factor	Gear reducer model		Motor type	
$P_{1n}$	$n_2$	$M_{2n}$	$i$	$F_{r2}$	$f_s$				
[KW]	[r/min]	[N.m]		[N]					
0.55	30	124	30	5122	2.1	NMRV075	80B5/B14	8026	
	22.5	156	40	5637	1.5				
	18	184	50	6073	1.2				
		15	210	60	6453	1.0	NMRV090	80B5/B14	8014
		17.5	189	80	6783	1.5			
		14	221	100	7306	1.2			
		18	196	50	6719	2.0	NMRV090	80B5/B14	8026
		15	224	60	7140	1.6			
		11.3	275	80	7859	1.1			
		9	315	100	8180	0.9	NMRV105	80B5	8014
		17.5	201	80	8571	2.4			
		14	236	100	9232	1.9			
		11.3	294	80	9931	1.8	NMRV105	80B5	8026
		9	344	100	10320	1.4			
		17.5	201	80	8571	2.6			
		14	236	100	9232	2.0	NMRV110	80B5	8014
		11.3	294	80	9931	1.9			
		9	344	100	10320	1.5			
0.75	280	23	5	1577	2.2	NMRV050	80B5/B14	8024	
	186.7	33	7.5	1805	2.1				
	140	43	10	1987	1.7				
		93.3	62	15	2274	1.2	NMRV063	80B5/B14	8024
		70	80	20	2503	0.9			
		93.3	63	15	2973	2.2			
		70	82	20	3272	1.6	NMRV063	80B5/B14	8024
		56	98	25	3524	1.3			
		46.7	112	30	3745	1.4			
		35	141	40	4122	1.0	NMRV063	90B5/B14	90S6
		180	33	5	2375	4.1			
		120	51	7.5	2734	2.9			
		90	67	10	3009	2.3	NMRV063	90B5/B14	90S6
		60	96	15	3444	1.6			
		45	123	20	3791	1.2			
		36	147	25	4084	0.9	NMRV063	90B5/B14	90L6
		30	167	30	4339	1.0			

功率	输出转速	输出转矩	公称传动比	输出轴 径向载荷	使用系数	减速机型号		电机型号	
Motor power	Output speed	Output torque	Nominal speed ratio	The output shaft Radial load	Service Factor	Gear reducer model		Motor type	
$P_{1n}$	$n_2$	$M_{2n}$	$i$	$F_{r2}$	$f_s$				
[KW]	[r/min]	[N.m]		[N]					
0.75	56	101	25	4160	2.0	NMRV075	80B5/B14	8024	
	46.7	117	30	4421	2.0				
	35	147	40	4865	1.5				
		28	174	50	5241	1.2	NMRV075	90B5/B14	90S6
		23.3	196	60	5569	1.0			
		60	97	15	4065	2.4			
		45	124	20	4474	1.9	NMRV075	90B5/B14	90S6
		36	149	25	4820	1.4			
		30	170	30	5122	1.5			
		22.5	213	40	5637	1.1	NMRV090	80B5/B14	8024
		28	182	50	5799	1.9			
		23.3	209	60	6163	1.5			
		17.5	258	80	6783	1.1	NMRV090	90B5/B14	90S6
		14	302	100	7306	0.9			
		30	179	30	5667	2.6			
		22.5	226	40	6238	1.8	NMRV090	90B5/B14	90S6
		18	267	50	6719	1.5			
		15	306	60	7140	1.1			
	17.5	274	80	8571	1.8	NMRV105	80B5	8024	
	14	322	100	9232	1.4				
	15	325	60	9023	1.9				
	11.3	401	80	9931	1.3	NMRV105	90B5	90S6	
	9	470	100	10320	1.0				
	17.5	274	80	8571	1.9				
	14	322	100	9232	1.5	NMRV110	80B5	8024	
	15	325	60	9023	2.1				
	11.3	401	80	9931	1.4				
	9	470	100	10320	1.1	NMRV110	90B5	90S6	
	11.3	401	80	12989	2.1				
	9	470	100	13500	1.7				
1.1	180	48	5	2375	2.7	NMRV063	90B5/B14	90L6	
	120	75	7.5	2734	2.0				
	90	98	10	3009	1.6				
		60	140	15	3444	1.1	NMRV063	90B5/B14	90L6
		45	180	20	3791	0.8			

**减速器选型表 Gear unit selection tables**

功率	输出转速	输出转矩	公称传动比	输出轴 径向载荷	使用系数	减速机型号 Gear reducer model	电机型号 Motor type	
Motor power	Output speed	Output torque	Nominal speed ratio	The output shaft Radial load	Service Factor			
$P_{1n}$	$n_2$	$M_{2n}$	$i$	$F_2$	$f_s$			
[KW]	[r/min]	[N.m]		[N]				
1.1	280	32	5	2050	4.0	NMRV063	90B5/B14	90S4
	186.7	50	7.5	2359	2.6			
	140	65	10	2597	2.0			
	93.3	92	15	2973	1.5			
	70	120	20	3272	1.1			
	56	144	25	3524	0.9			
	46.7	164	30	3745	1.0	NMRV075	90B5/B14	90L6
	90	98	10	3551	2.3			
	60	142	15	4065	1.7			
	45	182	20	4474	1.3			
	36	219	25	4820	1.0			
	30	249	30	5122	1.0			
	93.3	95	15	3509	2.1	NMRV075	90B5/B14	90S4
	70	122	20	3862	1.7			
	56	148	25	4160	1.3			
	46.7	171	30	4421	1.3			
	35	216	40	4865	1.0			
	36	228	25	5333	1.6			
	30	263	30	5667	1.8	NMRV090	90B5/B14	90L6
	22.5	331	40	6238	1.2			
	18	391	50	6719	1.0			
	15	448	60	7140	0.8			
	35	222	40	5383	1.6			
	28	266	50	5799	1.3			
	23.3	306	60	6163	1.0	NMRV090	90B5/B14	90S4
	22.5	345	40	7882	2.0			
	18	414	50	8491	1.6			
	15	476	60	9023	1.3			
	11.3	588	80	9931	0.9			
	28	278	50	7328	2.2			
23.3	324	60	7787	1.7	NMRV105	90B5	90L6	
17.5	402	80	8571	1.2				
14	473	100	9232	1.0				

功率	输出转速	输出转矩	公称传动比	输出轴 径向载荷	使用系数	减速机型号 Gear reducer model	电机型号 Motor type		
Motor power	Output speed	Output torque	Nominal speed ratio	The output shaft Radial load	Service Factor				
$P_{1n}$	$n_2$	$M_{2n}$	$i$	$F_2$	$f_s$				
[KW]	[r/min]	[N.m]		[N]					
1.1	22.5	345	40	7882	2.3	NMRV110	90B5	90L6	
	18	414	50	8491	1.8				
	15	476	60	9023	1.4				
	11.3	588	80	9931	1.0	NMRV110	90B5	90S4	
	28	278	50	7328	2.4				
	23.3	324	60	7787	1.9				
	17.5	402	80	8571	1.3				
	14	473	100	9232	1.0				
	11.3	588	80	12989	1.5				
	9	689	100	13500	1.1	NMRV130	90B5	90L6	
	17.5	408	80	11210	2.1	NMRV130	90B5	90S4	
	14	480	100	12076	1.5				
	1.5	280	44	5	2050	3.0	NMRV063	90B5/B14	90L4
		186.7	68	7.5	2359	1.9			
		140	88	10	2597	1.5			
		93.3	126	15	2973	1.1			
		70	164	20	3272	0.8			
		120	103	7.5	3227	2.1			
90		134	10	3551	1.7	NMRV075	100B5/B14	100L6	
60		193	15	4065	1.2	NMRV075	90B5/B14	90L4	
140		89	10	3065	2.2				
93.3		129	15	3509	1.6				
70		166	20	3862	1.3				
56		202	25	4160	1.0				
46.7		233	30	4421	1.0				
90		137	10	3929	2.7	NMRV090	100B5/B14	100L6	
60		198	15	4498	2.1				
45		258	20	4951	1.5				
36		310	25	5333	1.2				
30		358	30	5667	1.3				
70		170	20	4273	2.1				
56		207	25	4603	1.6	NMRV090	90B5/B14	90L4	
46.7		239	30	4891	1.7				
35		303	40	5383	1.2				
28		363	50	5799	0.9				
23.3		417	60	6163	0.8				

**减速器选型表 Gear unit selection tables**

功率	输出转速	输出转矩	公称传动比	输出轴 径向载荷	使用系数	减速机型号 Gear reducer model	电机型号 Motor type		
Motor power	Output speed	Output torque	Nominal speed ratio	The output shaft Radial load	Service Factor				
$P_{1n}$	$n_2$	$M_{2n}$	$i$	$F_{r2}$	$f_s$				
[KW]	[r/min]	[N.m]		[N]					
1.5	45	264	20	6256	2.4	NMRV105 90B5/B14	100L6		
	36	322	25	6739	2.0				
	30	363	30	7161	2.0				
	22.5	471	40	7882	1.5				
	18	565	50	8491	1.2				
	15	649	60	9023	1.0				
	35	315	40	6803	1.9	NMRV105 90B5	90L4		
	28	379	50	7328	1.6				
	23.3	442	60	7787	1.3				
	17.5	548	80	8571	0.9				
	45	264	20	6256	2.7			NMRV110 90B5/B14	100L6
	36	322	25	6739	2.4				
	30	363	30	7161	2.3				
	22.5	471	40	7882	1.7				
	18	565	50	8491	1.3				
	15	649	60	9023	1.1				
	35	315	40	6803	2.2	NMRV110 90B5	90L4		
	28	378	50	7328	1.7				
	23.3	442	60	7787	1.4				
	17.5	548	80	8571	0.9				
	22.5	471	40	10309	2.3			NMRV130 100B5/B14	100L6
	18	565	50	11105	1.9				
	15	659	60	11801	1.4				
	11.3	802	80	12989	1.1				
17.5	557	80	11210	1.5	NMRV130 95B5	90L4			
14	655	100	12076	1.1					
18	589	50	15182	2.7			NMRV150 100B5	100L6	
15	378	60	16133	2.1					
11.3	841	80	17757	1.5					
9	971	100	18000	1.2					
2.2	186.7	99	7.5	2785	1.9	NMRV075 100B5/B14			100L4
	140	131	10	3065	1.5				
	93.3	189	15	3509	1.1				

功率	输出转速	输出转矩	公称传动比	输出轴 径向载荷	使用系数	减速机型号 Gear reducer model	电机型号 Motor type		
Motor power	Output speed	Output torque	Nominal speed ratio	The output shaft Radial load	Service Factor				
$P_{1n}$	$n_2$	$M_{2n}$	$i$	$F_{r2}$	$f_s$				
[KW]	[r/min]	[N.m]		[N]					
2.2	186.7	100	7.5	3081	2.9	NMRV090 100B5/B14	100L4		
	140	132	10	3391	2.3				
	93.3	191	15	3882	1.9				
	70	249	20	4273	1.4				
	56	304	25	4603	1.1				
	46.7	351	30	4891	1.2				
	120	154	7.5	3570	2.2	NMRV090 112B5/B14	112M6		
	90	201	10	3929	1.8				
	60	291	15	4498	1.4				
	45	378	20	4951	1.0				
	70	255	20	5399	2.2			NMRV105 100B5/B14	100L4
	56	311	25	5816	1.9				
	46.7	356	30	6181	1.8				
	35	462	40	6803	1.3				
	28	555	50	7328	1.1				
	23.3	648	60	7787	0.9				
	90	203	10	4965	3.1	NMRV105 112B5/B14	112M6		
	60	294	15	5684	2.2				
	45	388	20	6256	1.6				
	36	473	25	6739	1.4				
	30	532	30	7161	1.4			NMRV110 100B5/B14	100L4
	70	255	20	5399	2.5				
	56	311	25	5816	2.2				
	46.7	356	30	6181	2.0				
35	462	40	3803	1.5					
28	555	50	7328	1.2					
23.3	648	60	7787	1.0	NMRV110 112B5/B14	112M6			
90	203	10	4965	3.5					
60	394	15	5684	2.6					
45	388	20	6256	1.9					
36	473	25	6739	1.6			NMRV130 100B5/B14	100L4	
30	532	30	7161	1.6					
35	468	40	8897	2.2					
28	563	50	9584	1.7					
23.3	657	60	10185	1.4					
17.5	816	80	11210	1.0					

**减速器选型表 Gear unit selection tables**

功率	输出转速	输出转矩	公称传动比	输出轴 径向载荷	使用系数	减速机型号 Gear reducer model	电机型号 Motor type	
Motor power	Output speed	Output torque	Nominal speed ratio	The output shaft Radial load	Service Factor			
$P_{1n}$	$n_2$	$M_{2n}$	$i$	$F_{r2}$	$f_s$			
[KW]	[r/min]	[N.m]		[N]				
2.2	36	473	25	8814	2.2	NMRV130	112B5	112M6
	30	539	30	9366	2.2			
	22.5	691	40	10309	1.6			
	18	829	50	11105	1.3			
	15	966	60	11801	1.0			
	28	570	50	13103	2.5	NMRV150	100B5	100L4
	23.3	657	60	13924	1.9			
	17.5	816	80	15325	1.4			
	14	960	100	16508	1.0			
	18	864	50	15182	1.9			
	15	995	60	16133	1.4			
	11.3	1233	80	17757	1.1			
9	1425	100	18000	0.8	NMRV150	112B5	112L4	
3.0	186.7	135	7.5	2785	1.4	NMRV075	100B5/B14	100L4
	140	178	10	3065	1.1			
	93.3	258	15	3509	0.8			
	186.7	137	7.5	3081	2.1	NMRV090	100B5/B14	100L4
	140	180	10	3391	1.7			
	93.3	361	15	3882	1.4			
	70	340	20	4273	1.0			
	56	414	25	4603	0.8			
	46.7	479	30	4891	0.9	NMRV105	100B5/B14	100L4
	93.3	264	15	4905	2.2			
	70	348	20	5399	1.6			
	56	425	25	5816	1.4			
46.7	485	30	6181	1.3				
35	630	40	6803	1.0				
28	757	50	7328	0.8				
3.0	120	210	7.5	4511	2.7	NMRV105	132B5	132S6
	90	277	10	4965	2.2			
	60	401	15	5684	1.6			
	45	528	20	6256	1.2	NMRV110	100B5/B14	100L4
	93.3	264	15	4905	2.5			
	70	348	20	5399	1.9			
	56	425	25	5816	1.6			
	46.7	485	30	6181	1.5			
	35	630	40	6803	1.1			
	28	757	50	7328	0.9			

功率	输出转速	输出转矩	公称传动比	输出轴 径向载荷	使用系数	减速机型号 Gear reducer model	电机型号 Motor type				
Motor power	Output speed	Output torque	Nominal speed ratio	The output shaft Radial load	Service Factor						
$P_{1n}$	$n_2$	$M_{2n}$	$i$	$F_{r2}$	$f_s$						
[KW]	[r/min]	[N.m]		[N]							
3.0	120	210	7.5	4511	3.1	NMRV110	132B5	132S6			
	90	277	10	4965	2.6						
	60	401	15	5684	1.9						
	45	528	20	6256	1.4						
	56	430	25	7607	2.2						
	46.7	491	30	8084	2.1	NMRV130	100B5/B14	100L4			
	35	638	40	8897	1.6						
	28	767	50	9584	1.3						
	23.3	869	60	10185	1.0						
	17.5	1113	80	11210	0.8						
	90	277	10	6494	3.5				NMRV130	132B5	132S6
	60	406	15	7434	2.6						
45	528	20	8182	2.0							
36	645	25	8814	1.6							
30	735	30	9366	1.6							
3.0	22.5	942	40	10309	1.2	NMRV150	100B5	100L4			
	28	778	50	13103	1.8						
	23.3	896	60	13924	1.4						
	17.5	1113	80	15325	1.0						
	14	1310	100	16508	0.8						
	45	541	20	11186	2.8	NMRV150	132B5	132S6			
	36	669	25	12050	2.1						
	30	783	30	12805	1.8						
	22.5	968	40	14094	1.9						
	18	1178	50	15182	1.4						
	15	1357	60	16133	1.1						
	11.3	1682	80	17757	0.8						
4.0	186.7	180	7.5	2785	1.0	NMRV075	112B5/B14	112M4			
	140	237	10	3065	0.8						
	186.7	182	7.5	3081	1.6						
	140	240	10	3391	1.3	NMRV090	112B5/B14	112M4			
	93.3	348	15	3882	1.0						
	70	453	20	4273	0.8						

**减速器选型表 Gear unit selection tables**

功率	输出转速	输出转矩	公称传动比	输出轴 径向载荷	使用系数	减速机型号 Gear reducer model	电机型号 Motor type
Motor power	Output speed	Output torque	Nominal speed ratio	The output shaft Radial load	Service Factor		
$P_{1n}$	$n_2$	$M_{2n}$	$i$	$F_{r2}$	$f_s$		
[KW]	[r/min]	[N.m]		[N]			
4.0	140	240	10	4285	2.2	NMRV105 112B5/B14	112M4
	93.3	352	15	4905	1.6		
	70	464	20	5399	1.2		
	56	566	25	5816	1.0		
	46.7	647	30	6181	1.0		
	120	280	7.5	4511	2.0	NMRV105 132B5	132M6
	90	369	10	4965	1.7		
	60	535	15	5684	1.2		
	140	240	10	4285	2.5	NMRV110 112B5/B14	112M4
	93.3	352	15	4905	1.9		
	70	464	20	5399	1.4		
	56	566	25	5816	1.2		
	46.7	647	30	6181	1.1		
	120	280	7.5	4511	2.3	NMRV110 132B5	132M6
	90	369	10	4965	1.9		
	60	535	15	5684	1.4		
	56	573	25	7607	1.6	NMRV130 112B5/B14	112M4
	46.7	655	30	8084	1.6		
	35	851	40	4497	1.2		
	28	1023	50	9584	1.0		
	23.3	1195	60	10185	0.8		
	120	283	7.5	5901	3.1	NMRV130 132B5	132M6
	90	369	10	6494	2.6		
	60	541	15	7434	2.0		
	45	705	20	8182	1.5	NMRV150 112B5	112M4
	36	860	25	8814	1.2		
	28	1037	50	13103	1.4		
	23.3	1195	60	13924	1.1		
	17.5	1484	80	15325	0.8		
	45	722	20	11186	2.1	NMRV150 132B5	132M6
36	892	25	12050	1.5			
30	1045	30	12805	1.3			
22.5	1291	40	14094	1.4			
18	1571	50	15182	1.0			
15	1809	60	16133	0.8			

功率	输出转速	输出转矩	公称传动比	输出轴 径向载荷	使用系数	减速机型号 Gear reducer model	电机型号 Motor type
Motor power	Output speed	Output torque	Nominal speed ratio	The output shaft Radial load	Service Factor		
$P_{1n}$	$n_2$	$M_{2n}$	$i$	$F_{r2}$	$f_s$		
[KW]	[r/min]	[N.m]		[N]			
5.5	186.7	250	7.5	3893	1.9	NMRV105 132B5	132S4
	140	330	10	4285	1.6		
	93.3	484	15	4905	1.2		
	70	638	20	5399	0.9		
	186.7	250	7.5	3893	2.2		
	140	330	10	4285	1.8		
	93.3	484	15	4905	1.4		
	70	638	20	5399	1.0	NMRV110 132B5	132M6
	120	390	7.5	4511	1.7		
	90	514	10	4965	1.4		
	60	753	15	5684	1.0		
	140	334	10	5605	2.5		
	93.3	490	15	6416	1.9		
	70	638	20	7062	1.4		
	56	788	25	7607	1.2		
	46.7	900	30	8084	1.2		
	35	1171	40	8897	0.9	NMRV130 132B5	132M6
	120	394	7.5	5901	2.2		
	90	514	10	6494	1.9		
	60	744	15	7434	1.4		
	45	993	20	8182	1.0		
	36	1212	25	8814	0.9	NMRV150 132B5	132S4
	30	1384	30	9366	0.8		
	70	645	20	9654	2.0		
	56	788	25	10400	1.5		
	46.7	934	30	11051	1.3		
	35	1171	40	12463	1.3	NMRV150 132B5	132M6
	28	1426	50	13103	1.0		
	23.3	1643	60	13924	0.8		
	45	993	20	11186	1.5		
36	1226	25	12050	1.1			
30	1436	30	12805	1.0			
22.5	1775	40	14094	1.0			

**减速器选型表 Gear unit selection tables**

功率	输出转速	输出转矩	公称传动比	输出轴 径向载荷	使用系数	减速机型号		电机型号
Motor power	Output speed	Output torque	Nominal speed ratio	The output shaft Radial load	Service Factor	Gear reducer model		Motor type
$P_{1n}$	$n_2$	$M_{2n}$	$i$	$F_{r2}$	$f_s$			
[KW]	[r/min]	[N.m]		[N]				
7.5	186.7	341	7.5	3893	1.4	NMRV105	132B5	132M4
	140	450	10	4285	1.2			
	93.3	660	15	4905	0.9			
	186.7	341	7.5	3893	1.6	NMRV110	132B5	132M4
	140	450	10	4285	1.3			
	93.3	660	15	4905	1.0			
	186.7	345	7.5	5092	2.2	NMRV130	132B5	132M4
	140	455	10	5605	1.8			
	93.3	668	15	6416	1.4			
	70	870	20	7062	1.0			
	56	1074	25	7607	0.9			
	46.7	1228	30	8084	0.8			
	70	880	20	9654	1.5	NMRV150	132B5	132M4
	56	1074	25	10400	1.1			
	46.7	1274	30	11051	0.9			
	35	1596	40	12163	1.0			
	120	537	7.5	8067	2.6			
	90	709	10	8878	2.1	NMRV150	160B5	160M6
60	1039	15	10163	1.4				
45	1354	20	11186	1.1				
36	1672	25	12050	0.8				
11	186.7	512	7.5	6962	2.3	NMRV150	160B5	160M4
	140	675	10	7663	1.8			
	93.3	990	15	8771	1.3			
	70	1291	20	9654	1.0			
	56	1576	25	10400	0.8			
15	186.7	698	7.5	6962	1.7	NMRV150	160B5	160L4
	140	921	10	7663	1.3			
	93.3	1351	15	8771	0.9			
	70	1760	20	9654	0.7			

**减速器选型表 Gear unit selection tables**

输出转矩	输入转速	公称传动比	功率	输出转速	输出轴 径向载荷	输入轴 径向载荷	减速机型号
Output torque	Input speed	Nominal speed ratio	Motor power	Output speed	The output shaft Radial load	The Input shaft Radial load	
$M_{2n}$	$n_1$	$i$	$P_{1n}$	$n_2$	$F_{r2}$	$F_{r1}$	Gear reducer model
[N.m]	[r/min]		[KW]	[r/min]	[N]	[N]	
18	1400	5	0.61	280	597	150	NRV030
18	1400	7.5	0.4	186.7	683	150	
18	1400	10	0.3	140	752	169	
18	1400	15	0.2	93.3	861	169	
18	1400	20	0.2	70	948	190	
21	1400	25	0.2	56	1021	210	
20	1400	30	0.2	46.7	1085	210	
18	1400	40	0.1	35	1194	210	
17	1400	50	0.1	28	1286	210	
16	1400	60	0.1	23.3	1367	210	
13	1400	80	0.1	17.5	1504	210	
34	1400	5	1.1	280	1149	250	
40	1400	7.5	0.9	186.7	1315	294	
40	1400	10	0.7	140	1447	331	
40	1400	15	0.5	93.3	1657	331	
39	1400	20	0.4	70	1824	350	
38	1400	25	0.3	56	1964	350	
45	1400	30	0.3	46.7	2087	350	
41	1400	40	0.2	35	2298	350	
39	1400	50	0.2	28	2475	350	
36	1400	60	0.2	23.3	2630	350	
33	1400	80	0.1	17.5	3895	350	
29	1400	100	0.1	14	3118	350	
62	1400	5	2.0	280	1577	350	NRV050
71	1400	7.5	1.6	186.7	1805	401	
72	1400	10	1.2	140	1987	490	
74	1400	15	0.9	93.3	2274	490	
73	1400	20	0.7	70	2503	490	
70	1400	25	0.5	56	2696	490	
84	1400	30	0.6	46.7	2865	490	
76	1400	40	0.4	35	3153	490	
73	1400	50	0.3	28	3397	490	
68	1400	60	0.3	23.3	3610	490	
65	1400	80	0.2	17.5	3973	490	
55	1400	100	0.2	14	4280	490	

**减速器选型表** Gear unit selection tables

输出转矩	输入转速	公称传动比	功率	输出转速	输出轴 径向载荷	输入轴 径向载荷	减速机型号 Gear reducer model
Output torque	Input speed	Nominal speed ratio	Motor power	Output speed	The output shaft Radial load	The Input shaft Radial load	
M <sub>2n</sub>	n <sub>1</sub>	i	P <sub>1n</sub>	n <sub>2</sub>	F <sub>r2</sub>	F <sub>r1</sub>	
[N.m]	[r/min]		[KW]	[r/min]	[N]	[N]	
105	1400	5	3.5	280	2050	430	NRV063
128	1400	7.5	2.8	186.7	2359	500	
130	1400	10	2.2	140	2597	571	
140	1400	15	1.7	93.3	2973	615	
135	1400	20	1.2	70	3272	667	
130	1400	25	1	56	3524	700	
160	1400	30	1.1	46.7	3745	700	
145	1400	40	0.8	35	4122	700	
135	1400	50	0.6	28	4440	700	
130	1400	60	0.5	23.3	4719	700	
122	1400	80	0.4	17.5	5193	700	
118	1400	100	0.3	14	5595	700	
185	1400	7.5	4.1	186.7	2785	700	
195	1400	10	3.3	140	3065	830	
200	1400	15	2.3	93.3	3509	851	
210	1400	20	1.9	70	3862	980	
200	1400	25	1.5	56	4160	980	
230	1400	30	1.5	46.7	4421	980	
220	1400	40	1.1	35	4865	980	
210	1400	50	0.9	28	5241	980	
200	1400	60	0.8	23.3	5569	980	
190	1400	80	0.6	17.5	6130	980	
180	1400	100	0.5	14	6603	980	
290	1400	7.5	6.4	186.7	3081	1082	
310	1400	10	5.2	140	3391	1257	
360	1400	15	4.1	93.3	3882	1270	
355	1400	20	3.1	70	4273	1270	
340	1400	25	2.5	56	4603	1270	
410	1400	30	2.6	46.7	4891	1270	
360	1400	40	1.8	35	5383	1270	
340	1400	50	1.4	28	5799	1270	
320	1400	60	1.1	23.3	6163	1270	
285	1400	80	0.8	17.5	6783	1270	
270	1400	100	0.7	14	7306	1270	

输出转矩	输入转速	公称传动比	功率	输出转速	输出轴 径向载荷	输入轴 径向载荷	减速机型号 Gear reducer model
Output torque	Input speed	Nominal speed ratio	Motor power	Output speed	The output shaft Radial load	The Input shaft Radial load	
M <sub>2n</sub>	n <sub>1</sub>	i	P <sub>1n</sub>	n <sub>2</sub>	F <sub>r2</sub>	F <sub>r1</sub>	
[N.m]	[r/min]		[KW]	[r/min]	[N]	[N]	
480	1400	7.5	10.5	186.7	3893	1200	NRV105
520	1400	10	8.7	140	4285	1463	
570	1400	15	6.5	93.3	4905	1604	
560	1400	20	4.8	70	5399	1700	
590	1400	25	4.2	56	5816	1700	
630	1400	30	3.9	46.7	6181	1700	
610	1400	40	2.9	35	6803	1700	
600	1400	50	2.4	28	7328	1700	
560	1400	60	1.9	23.3	7787	1700	
490	1400	80	1.3	17.5	8571	1700	
460	1400	100	1.1	14	9232	1700	
522	1400	7.5	12.1	186.7	3893	1200	
598	1400	10	10	140	4285	1463	
656	1400	15	7.5	93.3	4905	1604	
644	1400	20	5.6	70	5399	1700	
679	1400	25	4.8	56	5816	1700	
725	1400	30	4.5	46.7	6181	1700	
702	1400	40	3.3	35	6803	1700	
660	1400	50	2.6	28	7328	1700	
616	1400	60	2.1	23.3	7787	1700	
515	1400	80	1.4	17.5	8571	1700	
483	1400	100	1.1	14	9232	1700	
750	1400	7.5	16.3	186.7	5092	1500	
820	1400	10	13.5	140	5605	1845	
920	1400	15	10.3	93.3	6416	2070	
910	1400	20	7.8	70	7062	2100	
930	1400	25	6.5	56	7607	2100	
1040	1400	30	6.4	46.7	8084	2100	
1050	1400	40	4.9	35	8897	2100	
980	1400	50	3.8	28	9584	2100	
900	1400	60	3	23.3	10185	2100	
840	1400	80	2.3	17.5	11210	2100	
740	1400	100	1.7	14	12076	2100	
1200	1400	7.5	25.8	186.7	6962	1950	
1240	1400	10	20.2	140	7663	2267	

**减速器选型表** Gear unit selection tables

输出转矩	输入转速	公称传动比	功率	输出转速	输出轴 径向载荷	输入轴 径向载荷	减速机型号 Gear reducer model
Output torque	Input speed	Nominal speed ratio	Motor power	Output speed	The output shaft Radial load	The Input shaft Radial load	
$M_{2n}$	$n_1$	$i$	$P_{1n}$	$n_2$	$F_{r2}$	$F_{r1}$	
[N.m]	[r/min]		[KW]	[r/min]	[N]	[N]	NRV150
1250	1400	15	13.9	93.3	8771	2285	
1300	1400	20	11.1	70	9654	2674	
1200	1400	25	8.4	56	10400	2800	
1200	1400	30	7.1	46.7	11051	2800	
1550	1400	40	7.3	35	12163	2800	
1400	1400	50	5.4	28	13103	2800	
1260	1400	60	4.2	23.3	13924	2800	
1150	1400	80	3.1	17.5	15325	2800	
1000	1400	100	2.3	14	16508	2800	

输出转矩	输入转速	公称传动比	功率	输出转速	输出轴 径向载荷	输入轴 径向载荷	减速机型号 Gear reducer model
Output torque	Input speed	Nominal speed ratio	Motor power	Output speed	The output shaft Radial load	The Input shaft Radial load	
$M_{2n}$	$n_1$	$i$	$P_{1n}$	$n_2$	$F_{r2}$	$F_{r1}$	
[N.m]	[r/min]		[KW]	[r/min]	[N]	[N]	NRV030
20	900	5	0.47	180	692	175	
20	900	7.5	0.32	120	792	175	
20	900	10	0.24	90	870	197	
20	900	15	0.17	60	997	197	
20	900	20	0.13	45	1098	210	
23	900	25	0.14	36	1183	210	
21	900	30	0.11	30	1257	210	
20	900	40	0.09	22.5	1383	210	
18	900	50	0.07	18	1490	210	
17	900	60	0.06	15	1583	210	NRV040
15	900	80	0.04	11.3	1743	210	
41	900	5	0.91	180	1331	290	
44	900	7.5	0.66	120	1524	319	
44	900	10	0.51	90	1677	350	
45	900	15	0.36	60	1920	350	
44	900	20	0.28	45	2113	350	
43	900	25	0.23	36	2276	350	
49	900	30	0.23	30	2419	350	
45	900	40	0.17	22.5	2662	350	
42	900	50	0.14	18	2868	350	NRV075
39	900	60	0.11	15	3047	350	
35	900	80	0.09	11.3	3354	350	
32	900	100	0.07	9	3490	350	

输出转矩	输入转速	公称传动比	功率	输出转速	输出轴 径向载荷	输入轴 径向载荷	减速机型号 Gear reducer model
Output torque	Input speed	Nominal speed ratio	Motor power	Output speed	The output shaft Radial load	The Input shaft Radial load	
$M_{2n}$	$n_1$	$i$	$P_{1n}$	$n_2$	$F_{r2}$	$F_{r1}$	
[N.m]	[r/min]		[KW]	[r/min]	[N]	[N]	NRV050
78	900	5	1.76	180	1827	400	
84	900	7.5	1.2	120	2091	448	
84	900	10	0.95	90	2302	490	
84	900	15	0.67	60	2635	490	
77	900	20	0.48	45	2900	490	
75	900	25	0.39	36	3124	490	
90	900	30	0.42	30	3320	490	
82	900	40	0.31	22.5	3654	490	
77	900	50	0.25	18	3936	490	
72	900	60	0.21	15	4183	490	
68	900	80	0.16	11.3	4604	490	
56	900	100	0.12	9	4804	490	
133	900	5	3.0	180	4227	500	
151	900	7.5	2.2	120	4840	580	
153	900	10	1.7	90	2734	661	
155	900	15	1.2	60	3009	670	
148	900	20	0.91	45	3444	700	
137	900	25	0.7	36	4084	700	NRV075
175	900	30	0.79	30	4339	700	
160	900	40	0.58	22.5	4776	700	
145	900	50	0.45	18	5145	700	
138	900	60	0.37	15	5467	700	
128	900	80	0.29	11.3	6018	700	
124	900	100	0.25	9	6270	700	
215	900	7.5	3.1	120	3227	810	
230	900	10	2.6	90	3551	975	
235	900	15	1.8	60	4065	980	
235	900	20	1.4	45	4474	980	
215	900	25	1.1	36	4820	980	
260	900	30	1.2	30	5122	980	
240	900	40	0.84	22.5	5637	980	
220	900	50	0.66	18	6073	980	
210	900	60	0.55	15	6453	980	
200	900	80	0.43	11.3	7103	980	
190	900	100	0.36	9	7380	980	

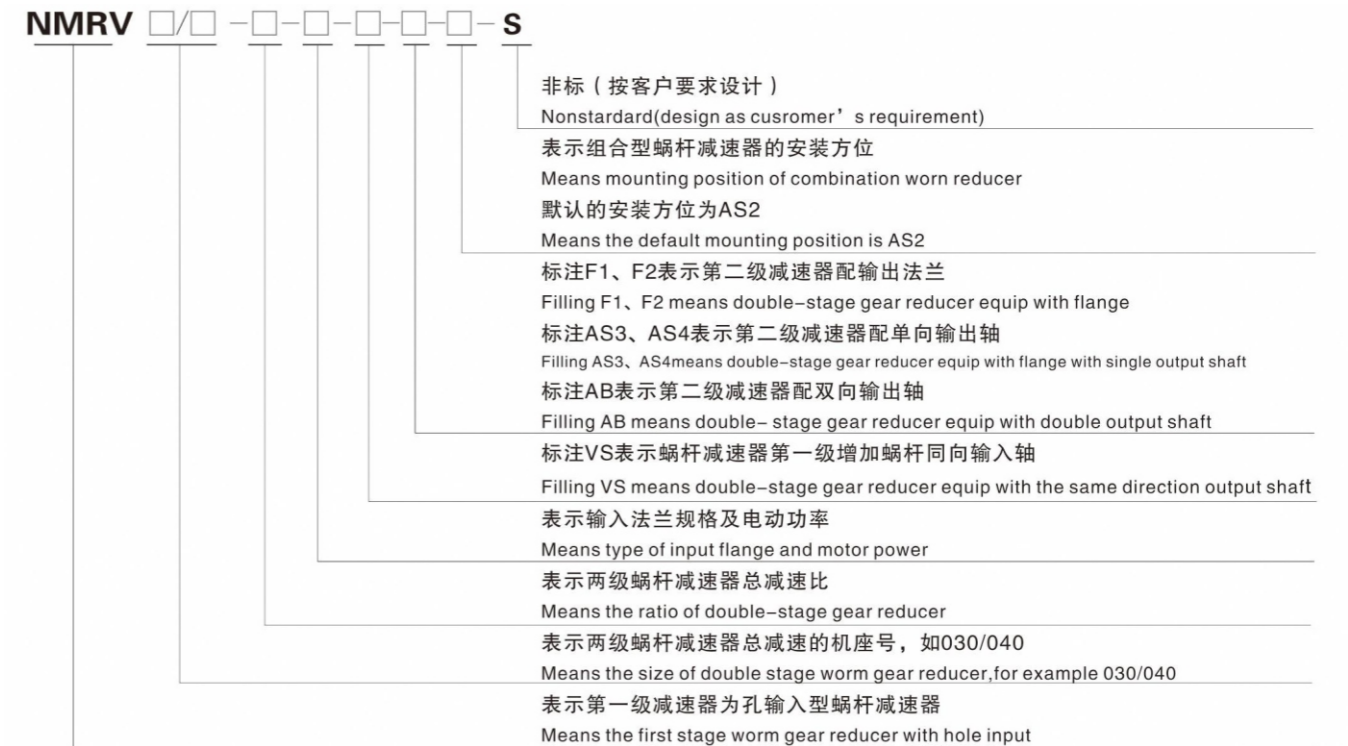
**减速器选型表** Gear unit selection tables

输出转矩	输入转速	公称传动比	功率	输出转速	输出轴 径向载荷	输入轴 径向载荷	减速机型号 Gear reducer model
Output torque	Input speed	Nominal speed ratio	Motor power	Output speed	The output shaft Radial load	The Input shaft Radial load	
M <sub>2n</sub>	n <sub>1</sub>	i	P <sub>1n</sub>	n <sub>2</sub>	F <sub>r2</sub>	F <sub>r1</sub>	
[N.m]	[r/min]		[KW]	[r/min]	[N]	[N]	
340	900	7.5	4.9	120	3570	1040	NRV090
370	900	10	4.1	90	3929	1270	
420	900	15	3.2	60	4498	1270	
390	900	20	2.3	45	4951	1270	
370	900	25	1.8	36	5333	1270	
460	900	30	1.9	30	5667	1270	
410	900	40	1.4	22.5	6238	1270	
390	900	50	1.1	18	6719	1270	
350	900	60	0.86	15	7140	1270	
315	900	80	0.63	11.3	7859	1270	
280	900	100	0.49	9	8180	1270	
565	900	7.5	8.1	120	4511	1390	
620	900	10	6.7	90	4965	1700	
660	900	15	4.9	60	5684	1700	
630	900	20	3.6	45	6256	1700	
660	900	25	3.1	36	6739	1700	
730	900	30	3	30	7161	1700	
690	900	40	2.2	22.5	7882	1700	
680	900	50	1.8	18	8491	1700	
620	900	60	1.4	15	9023	1700	
540	900	80	1	11.3	9931	1700	
490	900	100	0.78	9	10320	1700	
650	900	7.5	9.3	120	4511	1390	
713	900	10	7.7	90	4965	1700	
759	900	15	5.7	60	5684	1700	
725	900	20	4.1	45	6256	1700	
759	900	25	3.5	36	6739	1700	
840	900	30	3.5	30	7161	1700	
794	900	40	2.5	22.5	7882	1700	
748	900	50	2	18	8491	1700	
682	900	60	1.6	15	9023	1700	
567	900	80	1.1	11.3	9931	1700	
515	900	100	0.82	9	10320	1700	

输出转矩	输入转速	公称传动比	功率	输出转速	输出轴 径向载荷	输入轴 径向载荷	减速机型号 Gear reducer model
Output torque	Input speed	Nominal speed ratio	Motor power	Output speed	The output shaft Radial load	The Input shaft Radial load	
M <sub>2n</sub>	n <sub>1</sub>	i	P <sub>1n</sub>	n <sub>2</sub>	F <sub>r2</sub>	F <sub>r1</sub>	
[N.m]	[r/min]		[KW]	[r/min]	[N]	[N]	
880	900	7.5	12.4	120	5901	1740	NRV130
960	900	10	10.4	90	6496	2100	
1060	900	15	7.8	60	7434	2100	
1040	900	20	5.9	45	8182	2100	
1050	900	25	4.9	36	8814	2100	
1170	900	30	4.8	30	9366	2100	
1100	900	40	3.5	22.5	10309	2100	
1050	900	50	2.8	18	11105	2100	
940	900	60	2.1	15	11801	2100	
860	900	80	1.6	11.3	12989	2100	
780	900	100	1.2	9	13500	2100	
1400	900	7.5	19.5	120	8067	2270	
1480	900	10	15.7	90	8878	2700	
1450	900	15	10.5	60	10163	2645	
1500	900	20	8.4	45	11186	2800	
1380	900	25	6.3	36	12050	2800	
1400	900	30	5.4	20	12805	2800	
1800	900	40	5.7	22.5	14094	2800	
1600	900	50	4.1	18	15182	2800	
1440	900	60	3.2	15	16133	2800	
1300	900	80	2.4	11.3	17757	2800	
1150	900	100	1.8	9	18000	2800	

**特征表 Characteristic table**

i—公称减速比 i—Nominalratio		io—实际减速比 io—Actualratio			Z <sub>1</sub> —蜗杆头数 Z <sub>1</sub> —Starts of worm shaft					Z <sub>2</sub> —蜗轮齿数 Z <sub>2</sub> —Wormgears			
机座号 Base NO	i	5	7.5	10	15	20	25	30	40	50	60	80	100
RV030	io	5	7.5	10	15	20	25	30	40	50	60	80	/
	Z <sub>1</sub>	6	4	3	2	2	1	1	1	1	1	1	/
	Z <sub>2</sub>	30	30	30	30	40	25	30	40	50	60	80	/
	自锁性能 Auto-lock	不自锁 Non auto-lock									自锁 Auto-lock		/
RV040	io	5	7.5	10	15	20	25	30	40	50	60	80	100
	Z <sub>1</sub>	6	4	3	2	2	2	1	1	1	1	1	1
	Z <sub>2</sub>	30	30	30	30	40	50	30	40	50	60	80	100
	自锁性能 Auto-lock	不自锁 Non auto-lock									自锁 Auto-lock		/
RV050	io	5	7.5	10	15	20	25	30	40	50	60	80	100
	Z <sub>1</sub>	6	4	3	2	2	2	1	1	1	1	1	1
	Z <sub>2</sub>	30	30	30	30	40	50	30	40	50	60	80	100
	自锁性能 Auto-lock	不自锁 Non auto-lock									自锁 Auto-lock		/
RV063	io	5	7.5	10	15	20	25	30	40	50	60	80	100
	Z <sub>1</sub>	6	4	3	2	2	2	1	1	1	1	1	1
	Z <sub>2</sub>	30	30	30	30	40	50	30	40	50	60	80	100
	自锁性能 Auto-lock	不自锁 Non auto-lock									自锁 Auto-lock		/
RV075	io	/	7.5	10	15	20	25	30	40	50	60	80	100
	Z <sub>1</sub>	/	4	3	2	2	2	1	1	1	1	1	1
	Z <sub>2</sub>	/	30	30	30	40	50	30	40	50	60	80	100
	自锁性能 Auto-lock	不自锁 Non auto-lock									自锁 Auto-lock		/
RV090	io	/	7.5	10	15	20	25	30	40	50	60	80	100
	Z <sub>1</sub>	/	4	3	2	2	2	1	1	1	1	1	1
	Z <sub>2</sub>	/	30	30	30	40	50	30	40	50	60	80	100
	自锁性能 Auto-lock	不自锁 Non auto-lock									自锁 Auto-lock		/
RV110	io	/	7.5	10	15	20	25	30	40	50	60	80	100
	Z <sub>1</sub>	/	4	3	2	2	2	1	1	1	1	1	1
	Z <sub>2</sub>	/	30	30	30	40	50	30	40	50	60	80	100
	自锁性能 Auto-lock	不自锁 Non auto-lock									自锁 Auto-lock		/
RV130	io	/	7.5	10	15	20	25	30	40	50	60	80	100
	Z <sub>1</sub>	/	4	3	2	2	2	1	1	1	1	1	1
	Z <sub>2</sub>	/	30	30	30	40	50	30	40	50	60	80	100
	自锁性能 Auto-lock	不自锁 Non auto-lock									自锁 Auto-lock		/
RV150	io	/	7.5	10	15	20	25	30	40	50	60	80	100
	Z <sub>1</sub>	/	6	4	3	2	2	2	1	1	1	1	1
	Z <sub>2</sub>	/	45	40	45	40	50	60	40	50	60	80	100
	自锁性能 Auto-lock	不自锁 Non auto-lock									自锁 Auto-lock		/

**组合型二级蜗杆减速器型号表示 (一)**  
 Model designation for double stage worm gear reducer(一)

**示例 Example**
**NMRV 030/040-400-63B5(0.18)-VS AS3 AS1**

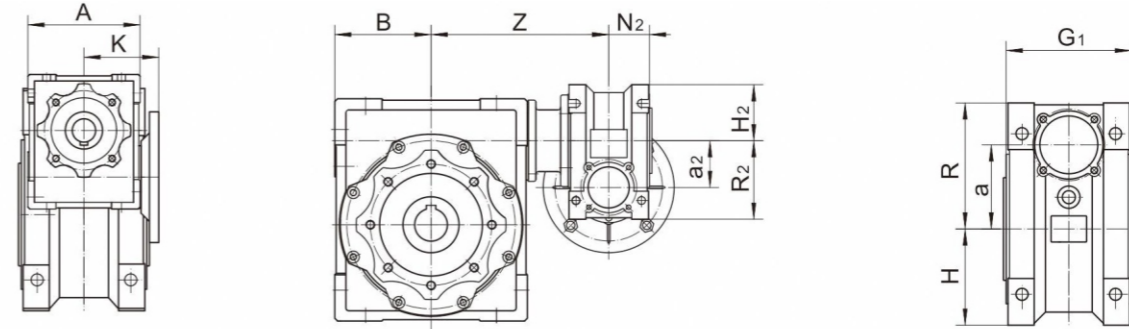

**组合型二级蜗杆减速器型号表示 (二)**  
 Model designation for double stage worm gear reducer(二)

**NRV** □/□ -□-□-□-□-**S**

- 非标 (按客户要求设计)  
Nonstandard (design as customer's requirement)
- 表示组合型蜗杆减速的安装方位  
Means position mounting of worm gear reducer combination
- 默认的安装方位为AS2  
The default mounting position is AS2
- 标注F1、F2表示二级减速器配输出法兰  
Filling F1、F2 means double-stage gear reducer equip with flange
- 标注AS3、AS4表示二级减速器配单向输出轴  
Filling AS3、AS4 means means double stage gear resucer equip with double output shaft
- 标注AB表示二级减速器配双向输出轴  
Filling AB means double-stage gear reducer equip with double output shaft
- 标注VS表示蜗杆减速器第一级增加蜗杆同向输入轴  
Filling VS means double stage gear reducer equip with the codirection output shaft
- 表示两级蜗杆减速器总减速比  
Means ratio of double-stage worm gear reducer
- 表示两级蜗杆减速器总减速的机座号, 如030/040  
Means the size of double stage worm gear reducer, for example 030/040
- 表示一级减速器为轴输入型蜗杆减速器  
Means the first stage worm gear reducer with shaft input

**示例 Example**
**NRV 030/050-900 -VS -AS3 PS1**

- 表示蜗杆减速器的安装方位为PS1  
Means the mounting positions of worm gear reducer is PS1
- 表示二级减速器右边配单向输出轴  
Means double-stage gear reducer right side with single output shaft
- 表示蜗杆减速器第一级增加蜗杆同向输入轴  
Means double-stage gear reducer equip with the some direction output shat
- 表示两级蜗杆减速器总减速比900  
Means ratio of double-stage worm gear reducer is900
- 表示两级蜗杆减速器总减速的机座号, 如030/050  
Means the size of double stage worm gear reducer, for example 030/050
- 表示一级减速器为孔输入型蜗杆减速器  
Means the first stage worm gear reducer with hole input

**组合型二级蜗杆减速器外型尺寸图**  
 Diagram for double-stage worm redcer combination


NMRV	030/040	030/050	030/063	040/040	040/050	040/063	040/075	040/090	050/050	050/063	050/075
A	80	80	80	100	100	100	100	100	120	120	120
K	55	55	55	70	70	70	70	70	80	80	80
B	50	60	72	50	60	72	86	103	60	72	86
Z	116	128	146	126	139	152	167	183	145.5	159	174
N <sub>2</sub>	29	29	29	37	37	37	37	37	43.5	43.5	43.5
a <sub>2</sub>	300	30	30	40	40	40	40	40	50	50	50
H <sub>2</sub>	40	40	40	50	50	50	50	60	60	60	60
R <sub>2</sub>	57	57	57	71.5	71.5	71.5	71.5	71.5	84	84	84
G <sub>1</sub>	74	87	106	74	87	106	114	134	87	106	114
a	40	50	63	40	50	63	75	90	50	63	75
R	71.5	84	102	71.5	84	102	119	135	84	102	119
H	50	60	72	50	60	72	86	103	60	72	86
NMRV	050/090	063/075	063/090	063/110	063/130	075/090	075/110	075/130	090/110	090/130	110/130
A	120	144.5	144	144	144	172	172	172	206	206	252.5
K	80	95.75	95	95	95	112.5	112.5	112.5	129.5	129.5	162
B	103	86	103	126	146	103	126	146	126	146	146
Z	190	183.5	199.5	231	251	211	235	255	245	265	259
N <sub>2</sub>	43.5	53	53	53	53	57	57	57	67	67	74
a <sub>2</sub>	50	63	63	63	63	75	75	75	90	90	110
H <sub>2</sub>	60	72	72	72	72	86	86	86	103	103	127.5
R <sub>2</sub>	84	102	102	102	102	119	119	119	135	135	167.5
G <sub>1</sub>	134	114	134	148	132	134	148	162	148	162	162
a	90	85	90	110	130	90	110	130	110	130	130
R	135	119	135	167.5	187.5	135	167.5	187.5	167.5	187.5	187.5
H	103	86	103	127.5	147.5	103	127.5	147.5	127.5	147.5	147.5

**NMRV联体型性能参数 Performance parameter**

功率	输出转速	输出转矩	公称传动比	输出轴 径向载荷	使用系数	减速机型号 Gear reducer model	电机型号 Motor type
Motor power	Output speed	Output torque	Nominal speed ratio	The output shaft Radial load	Service Factor		
$P_{1n}$	$n_2$	$M_{2n}$	$i$	$F_{r2}$	$f_s$		
[KW]	[r/min]	[N.m]		[N]			
0.06	4.7	55	300	3490	1.3	NMRV030/040	5614
	3.5	67	400	3490	0.9		
	2.8	88	500	3490	0.6		
	2.3	95	600	3490	0.7		
	1.9	103	750	3490	0.6		
	1.6	118	900	3490	0.5		
	1.2	143	1200	3490	0.4		
	0.8	184	1800	3490	0.3		
	0.6	217	2400	3490	0.2		
	0.4	247	3200	3490	0.2		
	0.4	278	4000	3490	0.1		
	0.3	327	5000	3490	0.1		
	1.6	118	900	4840	1.0	NMRV030/050	
	1.2	143	1200	4840	0.7		
	0.9	166	1500	4840	0.7		
	0.8	184	1800	4840	0.7		
	0.6	227	2400	4840	0.5		
	0.5	256	3000	4840	0.4		
	0.4	278	4000	4840	0.3	NMRV030/063	
	0.3	316	4800	4840	0.3		
	0.9	173	1500	6270	1.1		
	0.8	191	1800	6270	0.9		
	0.6	227	2400	6270	0.8		
	0.5	256	3000	6270	0.7		
0.4	295	4000	6270	0.6	NMRV040/075		
0.3	327	5000	6270	0.4			
0.6	267	2400	7380	1.1			
0.5	305	3000	7380	0.8			
0.4	362	4000	7380	0.7	NMRV040/090		
0.3	409	5000	7380	0.5			
0.5	329	3000	8180	1.4			
0.4	392	4000	8180	1.3			
0.3	430	5000	8180	1			

功率	输出转速	输出转矩	公称传动比	输出轴 径向载荷	使用系数	减速机型号 Gear reducer model	电机型号 Motor type
Motor power	Output speed	Output torque	Nominal speed ratio	The output shaft Radial load	Service Factor		
$P_{1n}$	$n_2$	$M_{2n}$	$i$	$F_{r2}$	$f_s$		
[KW]	[r/min]	[N.m]		[N]			
0.09	4.7	82	300	3490	0.8	NMR030/040	5624
	3.5	103	400	4840	1.2	NMR030/050	
	2.8	120	500	4840	1.0		
	2.3	146	600	4840	0.9		
	1.9	158	750	4840	0.8		
	1.6	177	900	4840	0.7		
	1.6	188	900	6270	1.0	NMR030/063	
	1.2	222	1200	6270	0.9		
	0.9	259	1500	6270	0.7		
	0.9	305	1500	7380	1.1	NMR040/075	
	0.8	331	1800	7380	1.0		
	0.6	400	2400	7380	0.7		
	0.5	494	3000	8180	0.9	NMR040/090	
	0.4	589	4000	8180	0.8		
	0.12	4.7	112	300	4840	1.2	
3.5		138	400	4840	0.9		
2.8		160	500	4840	0.7		
2.8		168	500	6270	1.3	NMR030/063	
2.3		199	600	6270	1.1		
1.9		217	750	6270	0.9		
1.6		279	900	7380	1.2	NMR040/075	
1.2		344	1200	7380	0.9		
0.8		470	1800	8180	0.8		
0.6		593	2400	8180	0.9	NMR040/090	
0.5		731	3000	10320	1.1	NMR050/105	
0.4		884	4000	10320	1.0		
0.3		1023	5000	10320	0.8		
0.5		731	3000	10320	1.2	NMR050/110	
0.4		884	4000	10320	1.0		
0.3	1023	5000	10320	0.8			
0.18	3.5	216	400	6270	1.0	NMR030/063	6324
	2.8	525	500	6270	0.8		
	2.3	336	600	7380	1.1	NMR040/075	
	1.9	371	750	7380	0.9		
	1.6	419	900	7380	0.8		

**NMRV联体型性能参数 Performance parameter**

功率	输出转速	输出转矩	公称传动比	输出轴 径向载荷	使用系数	减速机型号 Gear reducer model	电机型号 Motor type
Motor power	Output speed	Output torque	Nominal speed ratio	The output shaft Radial load	Service Factor		
$P_{1n}$	$n_2$	$M_{2n}$	$i$	$F_{r2}$	$f_s$		
[KW]	[r/min]	[N.m]		[N]			
0.18	1.2	544	1200	8180	1.0	NMRV040/090	6324
	0.9	647	1500	8180	0.8		
	0.8	727	1800	10320	1.3	NMRV050/105	
	0.6	948	2400	10320	0.9	NMRV050/110	
	0.8	727	1800	10320	1.5		
	0.6	948	2400	10320	1.1		
0.25	7	150	400	6270	1.4	NMRV030/063	6322
	5.6	175	500	6270	1.2		
	3.5	321	400	7380	1.1	NMRV040/075	7114
	2.8	375	500	7380	0.8		
	2.3	488	600	8180	1.2	NMRV040/090	
	1.9	553	750	8180	0.9		
	1.6	612	900	8180	0.8	NMRV050/105	
	1.2	776	1200	10320	1.1		
	0.9	924	1500	10320	1.0	NMRV050/110	
	0.8	1010	1800	10320	0.9		
	1.2	776	1200	10320	1.3	NMRV050/110	
	0.9	924	1500	10320	1.2		
	0.8	1010	1800	10320	1.1	NMRV063/130	
	0.6	1358	2400	13500	1.0		
0.5	1626	3000	13500	0.8			
0.4	1910	4000	13500	0.6			
0.3	2132	5000	13500	0.5			
0.3	2132	5000	13500	0.5			
0.37	4.7	383	300	7380	1.0	NMRV040/075	7124
	3.5	474	400	7380	0.7		
	4.7	406	300	8180	1.5	NMRV040/090	
	3.5	505	400	8180	1.2		
	2.8	593	500	8180	0.9		
	2.3	722	600	8180	0.8	NMRV050/105	
	1.9	837	750	10320	1.2		
	1.6	928	900	10320	1.0	NMRV050/110	
	1.2	1148	1200	10320	0.7		
	1.9	837	750	10320	1.3	NMRV050/110	
	1.6	928	900	10320	1.2		
	1.6	928	900	10320	1.2		
	1.2	1148	1200	10320	0.8		

功率	输出转速	输出转矩	公称传动比	输出轴 径向载荷	使用系数	减速机型号 Gear reducer model	电机型号 Motor type
Motor power	Output speed	Output torque	Nominal speed ratio	The output shaft Radial load	Service Factor		
$P_{1n}$	$n_2$	$M_{2n}$	$i$	$F_{r2}$	$f_s$		
[KW]	[r/min]	[N.m]		[N]			
0.37	0.9	1444	1500	13500	1.1	NMR063/130	7124
	0.8	1586	1800	13500	0.9		
0.55	4.7	615	300	10320	1.7	NMR050/105	8014
	3.5	810	400	10320	1.2		
	2.8	938	500	10320	1.0		
	2.3	1096	600	10320	0.9		
	1.9	1244	750	10320	0.8		
	4.7	615	300	10320	2.0		
	3.5	810	400	10320	1.4		
	2.8	938	500	10320	1.1		
	2.3	1096	600	10320	1.0		
	1.9	1244	750	10320	0.9	NMR063/130	
	2.8	957	500	13500	1.6		
	1.9	1382	750	13500	1.2		
	1.2	2057	1200	13500	0.8		
	0.75	4.7	838	300	10320	1.3	
3.5		1105	400	10320	0.9		
7		838	300	10320	1.5	NMR050/110	
5.6		1105	400	10320	1.1		
1.1	4.7	1274	300	13500	1.3	NMR063/130	90S4
	3.5	1621	400	13500	1.0		
1.5	2.8	1913	500	13500	0.8	NMR063/130	90L4
	4.7	1737	300	13500	1.0		
	3.5	2210	400	13500	0.7		

**减速器选型表** Gear unit selection tables

输出转矩	输入转速	公称传动比	功率	输出转速	输出轴 径向载荷	输入轴 径向载荷	减速机型号 Gear reducer model
Output torque	Input speed	Nominal speed ratio	Motor power	Output speed	The output shaft Radial load	The Input shaft Radial load	
$M_{2n}$	$n_1$	$i$	$P_{1n}$	$n_2$	$F_{r2}$	$F_{r1}$	
[N.m]	[r/min]		[KW]	[r/min]	[N]	[N]	
73	1400	300	0.08	4.7	3490	210	NMRV030/040
65	1400	400	0.06	3.5	3490	210	
145	1400	300	0.16	4.7	4840	210	
124	1400	400	0.11	3.5	4840	210	
120	1400	500	0.09	2.8	4840	210	NMRV030/050
145	1400	600	0.09	2.3	4840	210	
145	1400	750	0.08	1.9	4840	210	
145	1400	900	0.07	1.6	4840	210	
124	1400	1200	0.05	1.2	4840	210	
145	1400	1500	0.05	0.93	4840	210	
145	1400	1800	0.05	0.78	4840	210	
230	1400	300	0.24	4.7	6270	210	
230	1400	400	0.19	3.5	6270	210	
216	1400	500	0.15	2.8	6270	210	
230	1400	600	0.14	2.3	6270	210	NMRV030/063
216	1400	750	0.12	1.9	6270	210	
198	1400	900	0.09	1.6	6270	210	
230	1400	1200	0.09	1.2	6270	210	
216	1400	1500	0.08	0.93	6270	210	
198	1400	1800	0.06	0.78	6270	210	
230	1400	2400	0.06	0.58	6270	210	
216	1400	3000	0.05	0.47	6270	210	
390	1400	300	0.38	4.7	7380	350	
360	1400	400	0.28	3.5	7380	350	
320	1400	500	0.21	2.8	7380	350	NMRV040/075
390	1400	600	0.21	2.3	7380	350	
390	1400	750	0.19	1.9	7380	350	
390	1400	900	0.17	1.6	7380	350	
360	1400	1200	0.13	1.2	7380	350	
390	1400	1500	0.12	0.93	7380	350	
390	1400	1800	0.11	0.78	7380	350	
360	1400	2400	0.08	0.58	7380	350	
320	1400	3000	0.06	0.47	7380	350	
610	1400	300	0.56	4.7	8180	350	
610	1400	400	0.45	3.5	8180	350	

输出转矩	输入转速	公称传动比	功率	输出转速	输出轴 径向载荷	输入轴 径向载荷	减速机型号 Gear reducer model
Output torque	Input speed	Nominal speed ratio	Motor power	Output speed	The output shaft Radial load	The Input shaft Radial load	
$M_{2n}$	$n_1$	$i$	$P_{1n}$	$n_2$	$F_{r2}$	$F_{r1}$	
[N.m]	[r/min]		[KW]	[r/min]	[N]	[N]	
560	1400	500	0.35	2.8	8180	350	NMRV040/090
610	1400	600	0.31	2.3	8180	350	
560	1400	750	0.25	1.9	8180	350	
505	1400	900	0.21	1.6	8180	350	
610	1400	1200	0.2	1.2	8180	350	
560	1400	1500	0.16	0.93	8180	350	
505	1400	1800	0.13	0.78	8180	350	
610	1400	2400	0.12	0.58	8180	350	
560	1400	3000	0.1	0.47	8180	350	
460	1400	4000	0.07	0.35	8180	350	
410	1400	5000	0.05	0.28	8180	350	NMRV050/105
1100	1400	300	1	4.7	10320	490	
1030	1400	400	0.7	3.5	10320	490	
1000	1400	500	0.49	2.8	10320	490	
1030	1400	600	0.52	2.3	10320	490	
1100	1400	750	0.49	1.9	10320	490	
1100	1400	900	0.44	1.6	10320	490	
1030	1400	1200	0.33	1.2	10320	490	
1100	1400	1500	0.3	0.93	10320	490	
1100	1400	1800	0.27	0.78	10320	490	
1030	1400	2400	0.20	0.58	10320	490	NMRV050/110
1000	1400	3000	0.16	0.47	10320	490	
780	1400	4000	0.11	0.35	10320	490	
710	1400	5000	0.09	0.28	10320	490	
1265	1400	300	1.1	4.7	10320	490	
1185	1400	400	0.8	3.5	10320	490	
1100	1400	500	0.54	2.8	10320	490	
1185	1400	600	0.59	2.3	10320	490	
1265	1400	750	0.56	1.9	10320	490	
1265	1400	900	0.5	1.6	10320	490	
1185	1400	1200	0.38	1.2	10320	490	
1265	1400	1500	0.34	0.93	10320	490	
1265	1400	1800	0.31	0.78	10320	490	
1185	1400	2400	0.22	0.58	10320	490	
1100	1400	3000	0.18	0.47	10320	490	

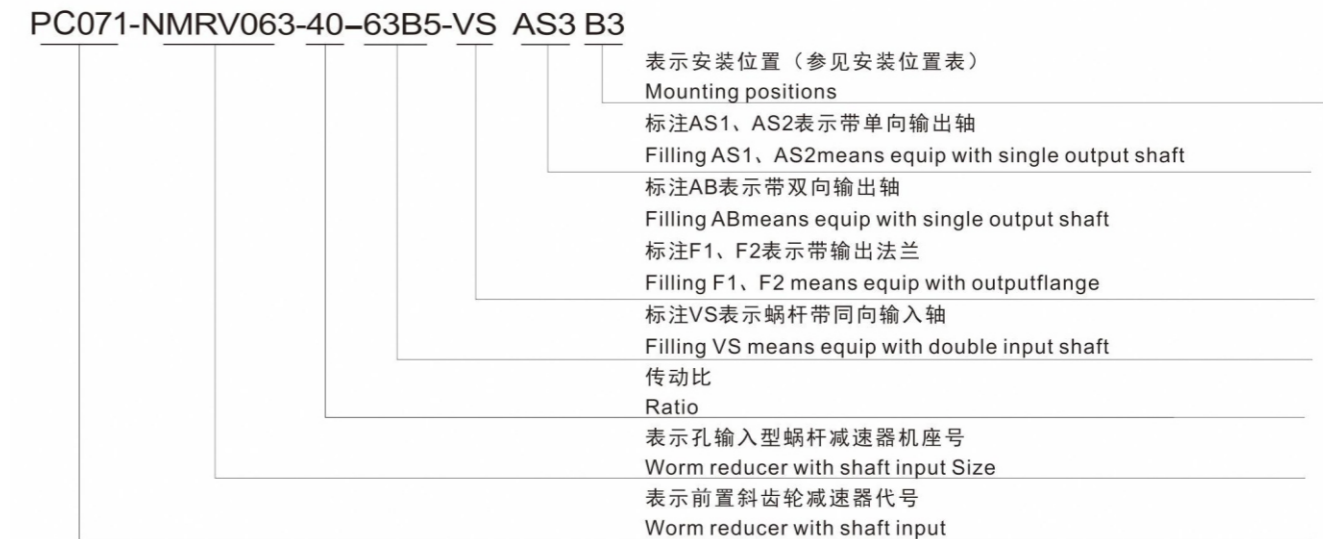
## 减速器选型表 Gear unit selection tables

输出转矩	输入转速	公称传动比	功率	输出转速	输出轴 径向载荷	输入轴 径向载荷	减速机型号 Gear reducer model
Output torque	Input speed	Nominal speed ratio	Motor power	Output speed	The output shaft Radial load	The Input shaft Radial load	
$M_{2n}$	$n_1$	$i$	$P_{1n}$	$n_2$	$F_{r2}$	$F_{r1}$	
[N.m]	[r/min]		[KW]	[r/min]	[N]	[N]	
819	1400	4000	0.11	0.35	10320	490	NMRV050/110
746	1400	5000	0.09	0.28	10320	490	
1765	1400	300	1.5	4.7	10350	700	
1650	1400	400	1.1	3.5	10350	700	
1550	1400	500	0.89	2.8	10350	700	
1650	1400	600	0.79	2.3	10350	700	
1760	1400	750	0.75	1.9	10350	700	
1760	1400	900	0.66	1.6	10350	700	NMRV063/130
1650	1400	1200	0.51	1.2	10350	700	
1760	1400	1500	0.45	0.93	10350	700	
1760	1400	1800	0.41	0.78	10350	700	
1650	1400	2400	0.3	0.58	10350	700	
1550	1400	3000	0.24	0.47	10350	700	
1220	1400	4000	0.16	0.35	10350	700	
1100	1400	5000	0.13	0.28	10350	700	

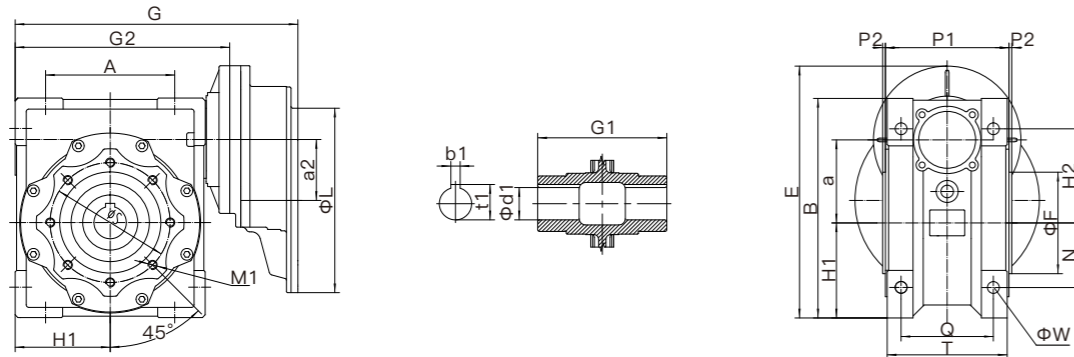
## PC+NMRV前置齿轮蜗杆减速器型号表示法 PC+NMRV worm gearbox model designation



### 示例 Example



PC+NMRV外形安装尺寸图 PC+NMRV outline dimensions diagram



	PC063+NMRV			PC071+NMRV				PC080/090+NMRV				
	040	050	063	050	063	075	090	090	090	090	090	090
A	70	80	100	80	100	120	140	140	140	140	140	140
E	147	167	192	177.5	202.5	228.5	260.5	260.5	260.5	260.5	260.5	260.5
G	165	185	212	193	220	251.5	285.5	285.5	285.5	285.5	285.5	285.5
G <sub>1</sub>	78	92	112	92	112	120	140	140	140	140	140	140
G <sub>2</sub>	120	140	167	140	167	198.5	232.5	232.5	232.5	232.5	232.5	232.5
H <sub>1</sub>	50	60	72	60	72	86	103	103	103	103	103	103
a	40	50	63	50	63	75	90	90	90	90	90	90
a <sub>2</sub>	40	40	40	50	50	50	50	50	50	50	50	50
L	140	140	140	160	160	160	160	160	160	160	160	160
T	71	85	103	85	103	112	130	130	130	130	130	130
Q	60	70	85	70	85	90	100	100	100	100	100	100
W	7	9	9	9	9	11	13	13	13	13	13	13
N	35	40	50	40	50	60	70	70	70	70	70	70
H <sub>2</sub>	55	64	80	64	80	93	102	102	102	102	102	102
B	121.5	144	174	144	174	205	238	238	238	238	238	238
F	60	70	80	70	80	95	110	110	110	110	110	110
p <sub>1</sub>	74	87	106	87	106	114	134	134	134	134	134	134
p <sub>2</sub>	2	2.5	3	2.5	3	3	3	3	3	3	3	3
d <sub>1</sub>	18/19	25	25	25	25	28	35	35	35	35	35	35
b <sub>1</sub>	6	8	8	8	8	8	10	10	10	10	10	10
t <sub>1</sub>	20.8/21.8	28.3	28.3	28.3	28.3	31.3	38.3	38.3	38.3	38.3	38.3	38.3
S	75	85	95	85	95	115	130	130	130	130	130	130
M1	4-M6×8	4-M8×8	8-M8×12	4-M8×8	8-M8×14	8-M8×14	8-M10×16	8-M10×16	8-M10×16	8-M10×16	8-M10×16	8-M10×16
Kg	3.4	4.6	7.3	5.1	7.8	10.6	14.6	14.6	14.6	14.6	14.6	14.6

PC+NMRV联体型性能参数 Performance parameter

功率 Motor power	输出转速 Output speed	输出转矩 Output torque	公称传动比 Nominal speed ratio	输出轴 径向载荷 The output shaft Radial load	使用系数 Service Factor	减速机型号 Gear reducer model	电机型号 Motor type				
P <sub>1n</sub>	n <sub>2</sub>	M <sub>2n</sub>	i	F <sub>r2</sub>	f <sub>s</sub>						
[KW]	[r/min]	[N.m]		[N]							
0.12	18.7	42	75	2833	1.2	PC063-NMRV040	6314				
	15.6	46	90	3011	1.2						
	11.7	57	120	3314	0.9						
	9.3	66	150	3490	0.7						
	7.8	74	180	3490	0.6						
	9.3	68	150	4840	1.3						
	0.18	7.8	75	180	4840	1.1		PC063-NMRV050	6324		
		5.8	88	240	4840	0.8					
		4.7	98	300	4840	0.7					
		5.8	92	240	6270	1.5					
		4.7	103	300	6270	1.2					
		18.7	64	75	2833	0.8					
0.18		15.6	70	90	3011	0.8	PC063-NMRV040	7116			
		11.7	85	120	3314	0.6					
		18.7	64	75	3889	1.4					
		15.6	71	90	4132	0.5					
		11.7	87	120	4548	1.1					
		9.3	101	150	4840	0.9					
	0.18	7.8	113	180	4840	0.7	PC063-NMRV050		7116		
		5.8	133	240	4840	0.6					
		9.3	103	150	6270	1.7					
		7.8	117	180	6270	1.4					
		5.8	139	240	6270	1.0					
		4.7	155	300	6270	0.8					
0.18		12	95	75	4506	1.2	PC071-NMRV050	7116			
		10	105	90	4788	1.4					
		7.5	126	120	4840	1.0					
		12	97	75	5889	2.2					
		10	107	90	6259	2.4					
		7.5	131	120	6270	1.8					
	0.18	6	152	150	6270	1.4	PC071-NMRV063		7116		
		5	168	180	6270	1.2					
		3.8	197	240	6270	0.9					
		3	218	300	6270	0.7					

## PC+NMRV联体型性能参数 Performance parameter

功率	输出转速	输出转矩	公称传动比	输出轴 径向载荷	使用系数	减速机型号 Gear reducer model	电机型号 Motor type		
Motor power	Output speed	Output torque	Nominal speed ratio	The output shaft Radial load	Service Factor				
$P_{1n}$	$n_2$	$M_{2n}$	$i$	$F_{r2}$	$f_s$				
[KW]	[r/min]	[N.m]		[N]					
0.18	5	179	180	7380	1.7	PC071-NMRV075	7116		
	3.8	211	240	7380	1.2				
	3	235	300	7380	1.0				
0.25	18.7	88	75	3889	1.0	PC071-NMRV050	7114		
	15.6	98	90	4132	1.1				
	11.7	121	120	4548	0.8				
	18.7	91	75	5083	1.8	PC071-NMRV063			
	15.6	100	90	5401	2.0				
	11.7	125	120	5945	1.5				
	9.3	143	150	6270	1.2	PC071-NMRV063			
	7.8	163	180	6270	1.0				
	5.8	192	240	6270	0.7				
	4.7	215	300	6270	0.6	PC071-NMRV063			
	12	135	75	5889	1.6				
	10	148	90	6259	1.8				
	0.37	7.5	181	120	6270	1.3		PC071-NMRV063	7126
		6	211	150	6270	1.0			
		9.3	151	150	7380	1.7			
7.8		172	180	7380	1.4	PC071-NMRV075			
5.8		201	240	7380	1.1				
4.7		230	300	7380	0.9				
12		139	75	6952	2.4	PC071-NMRV075			
10		155	90	7380	2.5				
7.5		191	120	7380	1.9				
6		219	150	7380	1.5	PC071-NMRV090			
5		248	180	7380	1.2				
5		263	180	8180	1.9				
3.8		318	240	8180	1.4	PC071-NMRV090			
3		358	300	8180	1.1				
18.7		134	75	5083	1.2		PC071-NMRV090		
15.6	148	90	5401	1.4					
11.7	185	120	5945	1.0					
9.3	212	150	6270	0.8					

功率	输出转速	输出转矩	公称传动比	输出轴 径向载荷	使用系数	减速机型号 Gear reducer model	电机型号 Motor type
Motor power	Output speed	Output torque	Nominal speed ratio	The output shaft Radial load	Service Factor		
$P_{1n}$	$n_2$	$M_{2n}$	$i$	$F_{r2}$	$f_s$		
[KW]	[r/min]	[N.m]		[N]			
0.55	18.7	138	75	6000	1.8	PC071-NMRV075	7124
	15.6	154	90	6375	1.9		
	11.7	191	120	7017	1.5		
	9.3	223	150	7380	1.1	PC071-NMRV075	
	7.8	254	180	7380	0.9		
	12	206	75	6952	1.6		
	10	230	90	7380	1.7	PC071-NMRV075	
	7.5	283	120	7380	1.3		
	6	324	150	8180	1.0		
	7.8	268	180	8180	1.5	PC071-NMRV090	
	5.8	321	240	8180	1.1		
	4.7	371	300	8180	0.9		
	6	347	150	8180	1.6	PC080-NMRV090	
	5	389	180	8180	1.3		
	3.8	471	240	8180	1.0		
3.8	509	240	10320	1.5	PC080-NMRV105		
3	577	300	10320	1.2			
3.8	509	240	10320	1.6			
3	577	300	10320	1.3	PC080-NMRV110		
18.7	205	75	6000	1.2			
15.6	230	90	6375	1.3			
11.7	284	120	7017	1.0	PC080-NMRV075		
9.3	332	150	7380	0.8			
12	306	75	6952	1.1			
10	341	90	7380	1.1	PC080-NMRV075		
15.6	240	90	7054	2.3			
11.7	297	120	7764	1.6			
9.3	355	150	8180	1.3	PC080-NMRV090		
7.8	398	180	8180	1.0			
10	357	90	8174	2.0			
7.5	441	120	8180	1.4	PC080-NMRV090		
6	516	150	8180	1.1			
5	578	180	8180	0.9			

## PC+NMRV联体型性能参数 Performance parameter

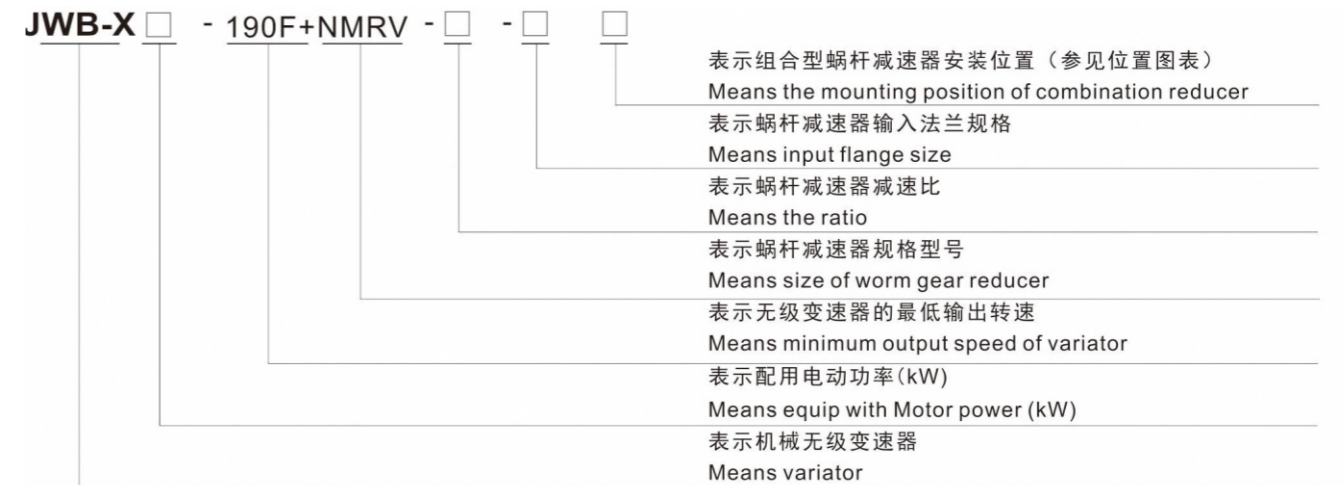
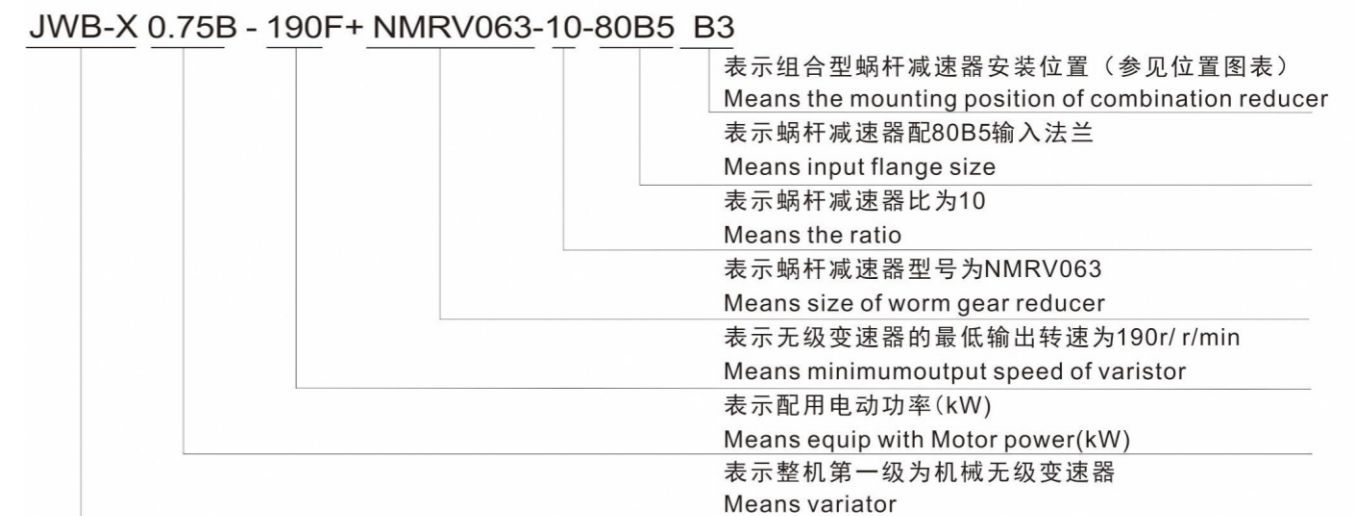
功率	输出转速	输出转矩	公称传动比	输出轴 径向载荷	使用系数	减速机型号 Gear reducer model	电机型号 Motor type
Motor power	Output speed	Output torque	Nominal speed ratio	The output shaft Radial load	Service Factor		
$P_{1n}$	$n_2$	$M_{2n}$	$i$	$F_{r2}$	$f_s$		
[KW]	[r/min]	[N.m]		[N]			
0.55	7.8	425	180	10320	1.7	PC080-NMRV105	8014
	5.8	513	240	10320	1.2		
	4.7	597	300	10320	1.0		
	7.5	462	120	10320	2.2	PC080-NMRV105	8026
	6	552	150	10320	1.8		
	5	620	180	10320	1.5		
	3.8	756	240	10320	1.0	PC080-NMRV110	8014
	7.8	425	180	10320	1.8		
	5.8	513	240	10320	1.3		
	4.7	597	300	10320	1.0	PC080-NMRV110	8026
	7.5	462	120	10320	2.6		
	6	552	150	10320	2.0		
	5	620	180	10320	1.6	PC080-NMRV130	8024
	3.8	756	240	10320	1.1		
	3.8	756	240	13500	1.6		
3	858	300	13500	1.3			
0.75	18.7	280	75	6000	0.9	PC080-NMRV075	8024
	15.6	313	90	6375	1.0		
	15.6	327	90	7054	1.7	PC080-NMRV090	
	11.7	405	120	7764	1.2		
	9.3	483	150	8180	0.9		
	7.8	543	180	8180	0.7	PC080-NMRV105	
	11.7	430	120	9811	1.9		
	9.3	506	150	10320	1.6		
	7.8	580	180	10320	1.2	PC090-NMRV105	
	5.8	700	240	10320	0.9		
	12.4	393	73	9614	2.8		
	9.3	508	96.8	10320	2.0	PC090-NMRV110	
	7.4	607	121	10320	1.6		
	6.2	682	145.2	10320	1.3		
	4.6	832	193.6	10320	0.9	PC080-NMRV110	
11.7	430	120	9811	2.2			
9.3	506	150	10320	1.7			
7.8	580	180	10320	1.3			
5.8	700	240	10320	0.9			

功率	输出转速	输出转矩	公称传动比	输出轴 径向载荷	使用系数	减速机型号 Gear reducer model	电机型号 Motor type
Motor power	Output speed	Output torque	Nominal speed ratio	The output shaft Radial load	Service Factor		
$P_{1n}$	$n_2$	$M_{2n}$	$i$	$F_{r2}$	$f_s$		
[KW]	[r/min]	[N.m]		[N]			
0.75	12.4	393	73	9614	3.2	PC090-NMRV110	90S6
	9.3	508	96.8	10320	2.3		
	7.4	607	121	10320	1.8		
	6.2	682	145.2	10320	1.5	PC080-NMRV130	8024
	4.6	832	193.6	10320	1.0		
	5.8	712	240	13500	1.4		
	4.7	813	300	13500	1.1	PC090-NMRV130	90S6
	12.4	399	73	12575	4.4		
	9.3	508	96.8	13500	3.2		
	7.4	607	121	13500	2.6	PC090-NMRV105	90L6
	6.2	682	145.2	1350	2.1		
	4.6	832	193.6	10320	1.5		
	3.7	944	242	13500	1.2	PC090-NMRV105	90L6
	12.4	576	73	9614	1.9		
	9.3	746	96.8	10320	1.4		
7.4	890	121	10320	1.1	PC090-NMRV105	90S4	
6.2	1000	145.2	10320	0.9			
19.3	392	73	8298	2.2			
14.5	508	96.8	9133	1.6	PC090-NMRV110	90L6	
11.6	599	121	9838	1.3			
9.6	586	145.2	10320	1.0			
7.2	828	193.6	10320	0.8	PC090-NMRV110	90S4	
12.4	576	73	9614	2.2			
9.3	746	96.8	10320	1.6			
7.4	890	121	10320	1.2	PC090-NMRV110	90L6	
6.2	1000	145.2	10320	1.0			
19.3	392	73	8298	2.5			
14.5	508	96.8	9133	1.8	PC090-NMRV110	90S4	
11.6	599	121	9838	1.5			
9.6	686	145.2	10320	1.1			
7.2	828	193.6	10320	0.8	PC090-NMRV130	90L6	
12.4	585	73	12575	3.0			
9.3	746	96.8	13500	2.2			
7.4	890	121	13500	1.7			
6.2	1000	145.2	13500	1.4			

**PC+NMRV联体型性能参数 Performance parameter**

功率	输出转速	输出转矩	公称传动比	输出轴 径向载荷	使用系数	减速机型号 Gear reducer model	电机型号 Motor type
Motor power	Output speed	Output torque	Nominal speed ratio	The output shaft Radial load	Service Factor		
$P_{1n}$	$n_2$	$M_{2n}$	$i$	$F_{r2}$	$f_s$		
[KW]	[r/min]	[N.m]		[N]			
1.1	4.6	1220	193.6	13500	1.0	PC090-NMRV130	90L6
	19.3	398	73	10853	3.5	PC090-NMRV130	
	14.5	508	96.8	11945	2.6		
	11.6	608	121	12868	2.0		
	9.6	686	145.2	13500	1.6		
	7.2	843	193.6	13500	1.2		
1.5	5.8	962	242	13500	0.9	PC090-NMRV105	90L4
	19.3	535	73	8298	1.6		
	14.5	693	96.8	9133	1.2		
	11.6	817	121	9838	1.0		
	9.6	936	145.2	10320	0.8	PC090-NMRV110	
	19.3	535	73	8298	1.9		
	14.5	693	96.8	8133	1.3		
	11.6	817	121	9838	1.1		
	9.6	936	145.2	10320	0.8	PC090-NMRV130	
	19.3	542	73	10852	2.6		
	14.5	693	96.8	11945	1.9		
	11.6	830	121	12868	1.5		
9.6	936	145.2	13500	1.1	PC090-NMRV105	90L2	
7.2	1149	193.6	13500	0.8			
38.6	398	73	6586	1.8			
28.9	516	96.8	7249	1.3			
23.1	617	121	7809	1.1			
38.6	398	73	6586	2.1			PC090-NMRV110
28.9	516	96.8	7249	1.5			
23.1	617	121	7809	1.2			
38.6	109	73	8614	2.9	PC090-NMRV130		
28.9	545	96.8	9481	2.0			
23.1	654	121	10213	1.6			
19.3	752	145.2	10853	1.3			

**组合型无级调速蜗杆减速器型号表示法**  
 Model designation for worm gear reducer with variator

**无级变速器型号**

**示例 Example**


**组合型无级调速蜗杆减速器性能参数表**  
 Selection table for worm gear reducer with variator

无级变速器型号	蜗杆减速器型号	i	n2	T2
JWB-X0.25B-190F	NMRV040-i-71B5	7.5	25~125	16~8
		10	19~95	21~11
		15	10~50	30~15
		20	13~65	44~23
		30	6~30	44~23
		40	5~25	41~26
	NMRV050-i-71B5	50	4~20	39~30
		40	5~25	51~26
		50	4~20	61~31
		60	3~15	63~32
JWB-X0.37B-190F	NMRV040-i-71B5	7.5	25~125	24~12
		10	19~95	30~16
		15	13~65	37~22
	NMRV050-i-71B5	7.5	25~125	26~13
		10	19~95	33~17
		15	13~65	45~22
		20	10~50	56~28
		25	8~40	66~33
		30	6~30	66~33
		40	5~25	76~39
JWB-X0.55B-190F	NMRV063-i-80B5	50	4~20	73~47
		7.5	25~125	38~20
		10	19~95	50~26
		15	13~65	66~35

无级变速器型号	蜗杆减速器型号	i	n2	T2
JWB-X0.55B-190F	NMRV063-i-80B5	20	10~50	83~43
		25	8~40	102~54
		30	6~30	97~51
		40	5~25	119~62
JWB-X0.75B-190F	NMRV063-i-80B5	7.5	25~125	50~26
		10	19~95	66~34
		15	13~65	87~46
		20	10~50	109~57
		25	8~40	130~70
		30	6~30	128~67
		40	5~25	145~82
		JWB-X1.1B-190F(S)	NMRV075-i-90B5	7.5
10	19~95			97~52
15	13~65			131~70
20	10~50			164~87
25	8~40			191~102
30	6~30			214~114
40	5~25			220~128
JWB-X1.1B-190F	NMRV090-i-100B5	10	19~95	123~64
		15	13~65	181~94
		20	10~50	238~124
		25	8~40	284~148
		30	6~30	344~180
		40	5~25	397~208
		50	4~20	419~219

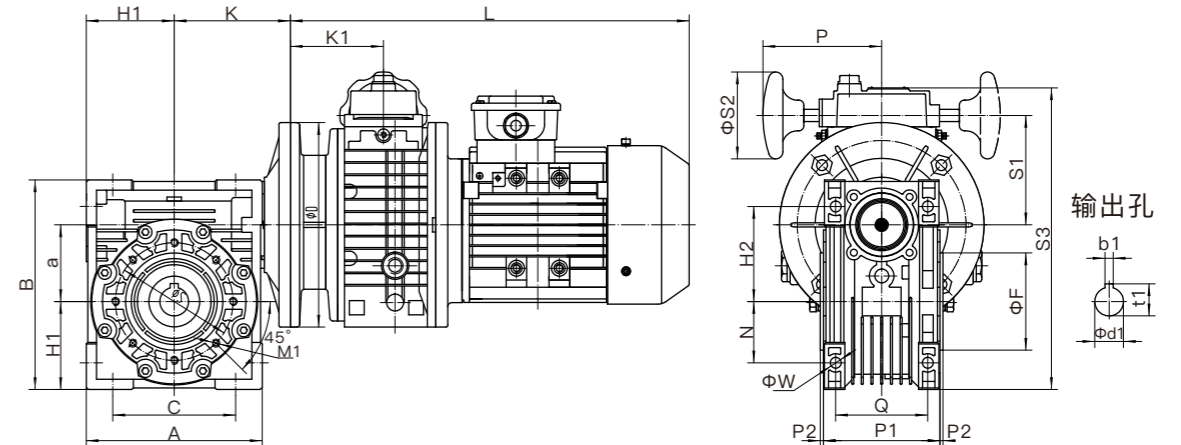
**组合型无级调速蜗杆减速器性能参数表**  
 Selection table for worm gear reducer with variator

无级变速器型号	蜗杆减速器型号	i	n2	T2
JWB-X1. 1B-190F	NMRV110-i-100B5	50	4~20	545~286
		60	3~15	560~324
		80	2~10	490~403
		100	2~10	460
	NMRV130-i-100B5	60	3~15	620~325
		80	2~10	767~402
JWB-X1. 5B-190F(S)	NMRV075-i-90B5	7.5	25~125	118~59
		10	19~95	142~71
		15	13~65	191~96
		20	10~50	210~120
		25	8~40	200~140
		30	6~30	230~157
	NMRV090-i-90B5	40	5~25	220~176
		7.5	25~125	129~67
		10	19~95	172~89
		15	13~65	248~130
		20	10~50	327~171
		25	8~40	391~204
		30	6~30	472~247
		40	5~25	546~286
NMRV110-i-90B5	50	4~20	600~390	
	60	3~15	560~422	
JWB-X2.2-190F	NMRV130-i-132B5	7.5	25~125	202~106
		10	19~95	270~141

无级变速器型号	蜗杆减速器型号	i	n2	T2
JWB-X2.2-190F	NMRV110-i-132B5	15	13~65	408~204
		20	10~50	504~256
		25	8~40	590~324
		30	6~30	630~375
		40	5~25	610~485
	NMRV130-i-132B5	40	5~25	546~286
		50	4~20	600~390
		60	3~15	560~422
		80	2~10	840~804
		100	2~10	740
JWB-X3-190F	BMRV110-i-132B5	10	19~95	370~194
		15	13~65	561~281
		20	10~50	560~365
		25	8~40	590~445
		30	6~30	630~514
		40	5~25	610
	NMRV130-i-132B5	15	13~65	546~270
		20	10~50	714~354
		25	8~40	614~404
		30	6~30	744~368
		40	5~25	1050~614
		50	4~20	980~774
		10	19~95	495~268
JWB-X4-190F	NMRV110-i-132B5	15	13~65	570~411
		20	10~50	560~487

**组合型无级调速蜗杆减速器性能参数表**  
 Selection table for worm gear reducer with variator

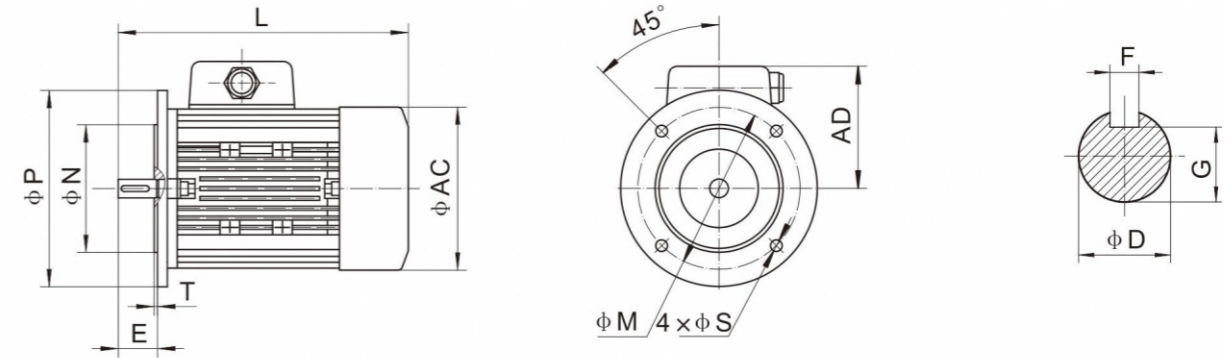
无级变速器型号	蜗杆减速器型号	i	n2	T2
JWB-X4-190F	NMRV110-i-132B5	25	8~40	630
		30	6~30	610
	NMRV130-i-132B5	15	13~65	652~366
		20	10~50	850~477
		25	8~40	930~545
		30	6~30	1009~497
		40	5~25	1050~823

**组合型无级调速蜗杆减速器尺寸图**  
 Dimension of worm gearbox with variator


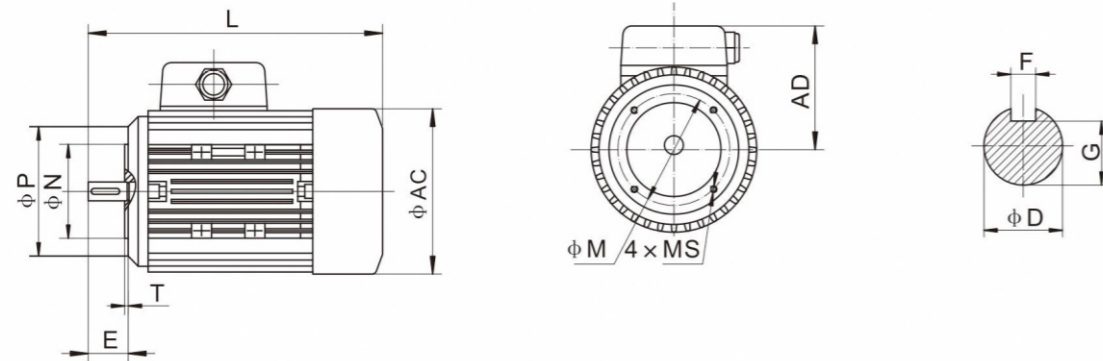
型号	A	C	B	H1	a	S	M1	D	K	K1	L
JWB-X0.25B-190F+NMRV040-i-71B5	100	70	121.5	50	40	75	M6	160	70	81	334
JWB-X0.37B-190F+NMRV040-i-71B5											
JWB-X0.25B-190F+NMRV050-i-71B5	120	80	144	60	50	85	M8	160	80	81	334
JWB-X0.37B-190F+NMRV050-i-71B5											
JWB-X0.55B-190F+NMRV063-i-80B5	144	100	174	72	63	95	M8	200	95	88	384
JWB-X0.75B-190F+NMRV063-i-80B5											
JWB-X1.1-190F(S)+NMRV075-i-90B5	172	120	205	86	75	115	M8	250	113	174	533
JWB-X1.5-190F(S)+NMRV075-1-90B5											
JWB-X1.1-190F+NMRV090-i-100B5	206	140	238	103	90	130	M10	250	138	174	533
JWB-X1.5-190F+NMRV090-i-100B5											
JWB-X1.1-190F+NMRV110-i-100B5	252.5	170	295	127.5	110	165	M10	250	160	174	533
JWB-X1.5-190F+NMRV110-1-100B5											
JWB-X2.2-190F+NMRV110-i-132B5	252.5	170	295	127.5	110	165	M10	300	160	174	533
JWB-X3-190F+NMRV110-i-132B5											
JWB-X4-190F+NMRV110-i-132B5											
JWB-X2.2-190F+NMRV130-i-132B5	292.5	200	335	147.5	130	215	M12	300	180	244	673
JWB-X3-190F+NMRV130-i-132B5											
JWB-X4-190F+NMRV130-i-132B5											

**组合型无级调速蜗杆减速器尺寸图**  
 Dimension of worm gearbox with variator

型号	N	H2	Q	P	P1	P2	W	F	d1	b1	t1	S1	S2	S3
JWB-X0.25B-190F+NMRV040-i-71B5	35	55	60	105	74	2	6.5	60	18	6	20.8	85	85	210
JWB-X0.37B-190F+NMRV040-1-71B5									19		21.8			
JWB-X0.25B-190F+NMRV050-i-71B5	40	64	70	105	87	2.5	8.5	70	25	8	28.3	85	85	230
JWB-X0.37B-190F+NMRV050-1-71B5									25		28.3			
JWB-X0.55B-190F+NMRV063-1-80B5	50	80	85	120	106	3	9	80	25	8	28.3	108	110	266
JWB-X0.75B-190F+NMRV063-1-80B5									25		28.3			
JWB-X1.1-190F(S)+NMRV075-1-90B5	60	93	90	147	114	3	11	95	28	8	31.3	127	110	315
JWB-X1.5-190F(S)+NMRV075-1-90B5									28		31.3			
JWB-X1.1-190F+NMRV090-1-100B5	70	102	100	147	134	3	13	110	35	10	38.3	127	110	347
JWB-X1.5-190F+NMRV090-1-100B5									35		38.3			
JWB-X1.1-190F+NMRV110-i-100B5	85	125	115	147	148	3.5	14	130	42	12	45.3	163	110	428.5
JWB-X1.5-190F+NMRV110-1-100B5									42		45.3			
JWB-X2.2-190F+NMRV110-1-132B5	85	125	115	147	148	3.5	14	130	42	12	45.3	163	110	428.5
JWB-X3-190F+NMRV110-i-132B5									42		45.3			
JWB-X4-190F+NMRV110-1-132B5	100	140	120	160	161	4.5	16	180	45	14	48.8	207	110	541.5
JWB-X2.2-190F+NMRV130-i-132B5									45		48.8			
JWB-X3-190F+NMRV130-1-132B5	100	140	120	160	161	4.5	16	180	45	14	48.8	207	110	541.5
JWB-X4-190F+NMRV130-i-132B5									45		48.8			

**电动机型号参数表(一) Motor specifications(一)**

**B5型机座安装型式 B5 base mounting**

机座号	4极	6极	外形尺寸			安装尺寸					轴伸尺寸			
	KW	KW	AC	AD	L	P	N	T	M	S	E	F	D	G
56	0.06	-	108	83	204	120	80	3	100	7	20	3	9	7.2
	0.09													
63	0.12	-	121	88	211	140	95	3	115	9	23	4	11	8.5
	0.18													
71	0.25	0.18	138	93	247	160	110	3.5	130	10	30	5	14	11
	0.37	0.25												
80	0.55	0.37	154	108	270	200	130	3.5	165	12	40	6	19	15.5
	0.75													
	-													
90S	1.1	0.75	174	116	312	200	130	3.5	165	12	50	8	24	20
90L	1.5	1.1	174	116	339	200	130	3.5	165	12	50	8	24	20
100	2.2	1.5	184	137	379	250	180	4	215	15	60	8	28	24
	3													
112	4	2.2	207	143	395	250	180	4	215	15	60	8	28	24
132S	5.5	3	244	165	505	300	230	4	265	15	80	10	38	33
132M	7.5	4	244	165	505	300	230	4	265	15	80	10	38	33
		5.5												
160M	11	7.5	325	255	600	350	250	5	300	19	110	12	42	37
160L	15	11			645									

**电动机型号参数表(一) Motor specifications(一)**

**B14型机座安装型式 B14 base mounting**

机座号	极数		外形尺寸			安装尺寸					轴伸尺寸			
	4极	6极	AC	AD	L	P	N	T	M	S	E	F	D	G
56	0.06	-	108	83	204	80	50	3	65	5	20	3	9	7.2
	0.09	-												
63	0.12	-	121	88	211	90	60	3	75	5	23	4	11	8.5
	0.18	-												
71	0.25	0.18	138	93	247	105	70	3.5	85	6	30	5	14	11
	0.37	0.25												
80	0.55	-	154	108	270	120	80	3.5	100	6	40	6	19	15.5
	0.75	0.37												
	-	0.55												
90S	1.1	0.75	174	116	312	140	95	3.5	115	8	50	8	24	20
90L	1.5	1.1	174	116	339	140	95	3.5	115	8	50	8	24	20
100	2.2	-	184	137	379	160	110	4	130	8	60	8	28	24
	3	1.5												
112	4	2.2	207	143	395	160	110	4	130	8	60	8	28	24

备注:  
 1、4级三相异步电动机同步转速1400/min,380V,50Hz  
 2、6级三相异步电动机同步转速900/min,380V,50Hz  
 3、56-112机座为铝合金外壳; 132&160座机为铸铁外壳。  
 4、尺寸仅供参考,以实物为准  
 Remark:  
 1、Four poles,three-phase asynchronous,synchronous speed:1400r/min,380V,50Hz.  
 2、Six poles,three-phase asynchronous,synchronous speed:900r/min,380v,50Hz.  
 3、56-112 bases are aluminum housing;132&160 base is iron cast iron.  
 4、Fractal dimension is for reference only, in kind prevail

**润滑油 Lubricant**

- RV030~105铝外壳蜗杆减速器在出厂时已加入永久性的润滑油,无需再加润滑油。
  - RV110~150配备排气塞、油镜和排油孔,请观察油镜油量位置进行加油或换油。
  - 如需在减速器的其它位置增加排气塞,请在订货时事先提出相关要求。
  - RV110~150非B3安装时,请订货时事先提出,否则润滑油按B3安装位置提供。
- RV030-105worm gearbox with aluminum housing are filled with permanent lubricant before delivery,no need to refuel again.
  - RV110-150are equipped with vent plug,oil watching-lens and oil hole ,please pay attention to the v-olume level through oil watching-lens to refuel or changing oil.
  - Please tell us your request when place order if you need more vent plugs.
  - We will refuel RV110-150 as B3 oii volume if customers don't remark the mountings.

**RV系列蜗杆减速器加油量(单位: ml)**

RV warm gearbox cubricant volume (unit:ml)

RV各型号加油量标准							
型号	B3	B6	B7	V5	B8	V6	润滑油品牌
RV030	30	30	30	30	30	30	合成油(博达) 3004A-320
RV040	50	80	80	80	80	50	
RV050	110	130	130	150	150	110	
RV063	270	250	250	350	250	200	
RV075	550	500	500	650	500	350	
RV090	1000	1000	1000	1200	750	750	
RV105	2000	1600	1600	1600	1600	1600	
RV110	2800	2200	2200	3000	2200	2200	车路士 GER 460
RV130	4200	3000	3000	4500	3000	3300	
RV150	7000	5400	5400	7000	5100	5100	

**PC系列蜗杆减速器加油量(单位: ml)**

Fill oil quantity for PC(unit:ml)

PC63	PC71	PC80	PC90
50	70	150	160



